

Luke P

Wall Mounted



DESCRIPTION

Ceiling/wall surface mounting plafonira for unshielded light in the room. Polycarbonate body with opal diffuser. Available in different sizes for a wide range of lighting applications, that fits both indoors & Outdoors.

PHILIPS

Driver

LUMILEDS OSRAM

LED Chip



Illumination Data

Color temperature:	3000K 4000K
Lumen output:	1500 LM 2500LM
CRI	80
Beam angle	120° Flood

Physical Specification

Material Finish	Die cast aluminium
Diffuser	Polycarbonate
Optics	Opal
Ingress protection (IP)	65
Impact Protection (IK)	08

Electric Characteristics

Light source	LED Built in
LED type	SMD
Power	15 Watt 25 Watt
P.F	>0.9
LED chip	Lumileds Osram
Driver	Philips

Installation

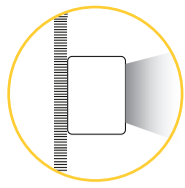
Installation	Surface Wall Mounted
Wiring	Product complete with electronic components

Luminaire Body Finish Color

White Ral 9003	
Grey Ral 9006	
Black Ral 9005	

Certificate & Warranty

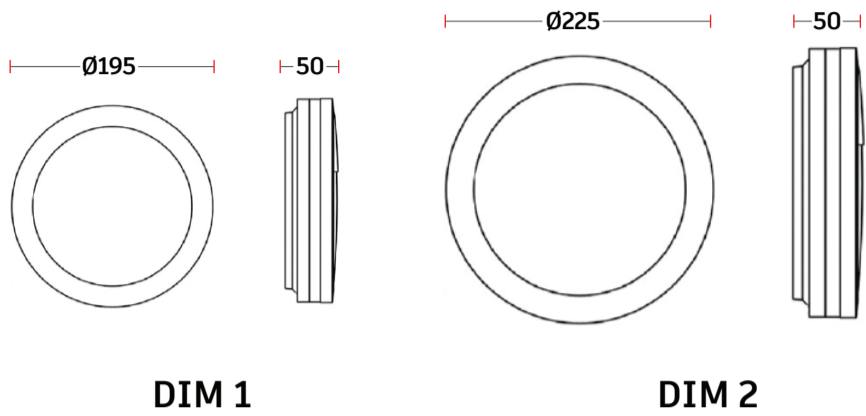
Certification	CB CE LM79 LM80 TM21 Photo biological
Lifetime expectancy	50.000 hrs
Warranty duration	Up to 5 years



Luke P

Wall Mounted

Dimensions & Specs



DIM 1

DIM 2

All dimensions in these sketches are in millimeters*

Dimensions & specs of luminaires

Dim	Ø	Thickness
1	195mm	50mm
2	225mm	50mm

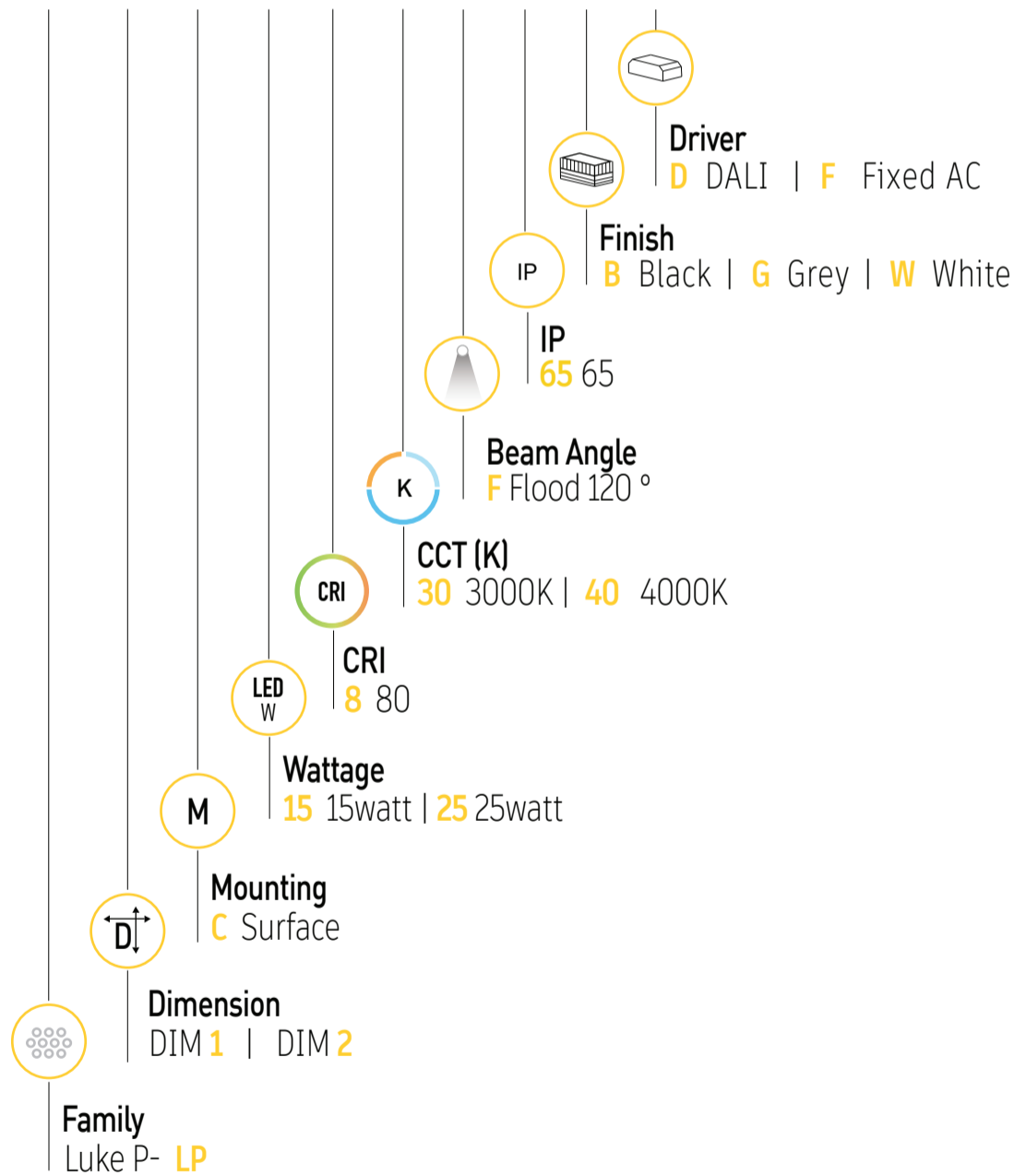
All dimensions in this schedule table are in millimeters

Specs

Wattage (W)	lumen (lm)
15 watt	1500lm
25 watt	2500lm

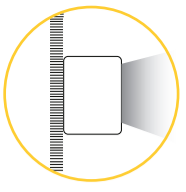
Product coding system

BR - LP X C XX.8 XX S 65 X - X



BR - LP X C XX.8 XX S 65 X - X

Configure luminaire specs & send us the code for order confirmation



Luke P

Wall Mounted

Optional Application



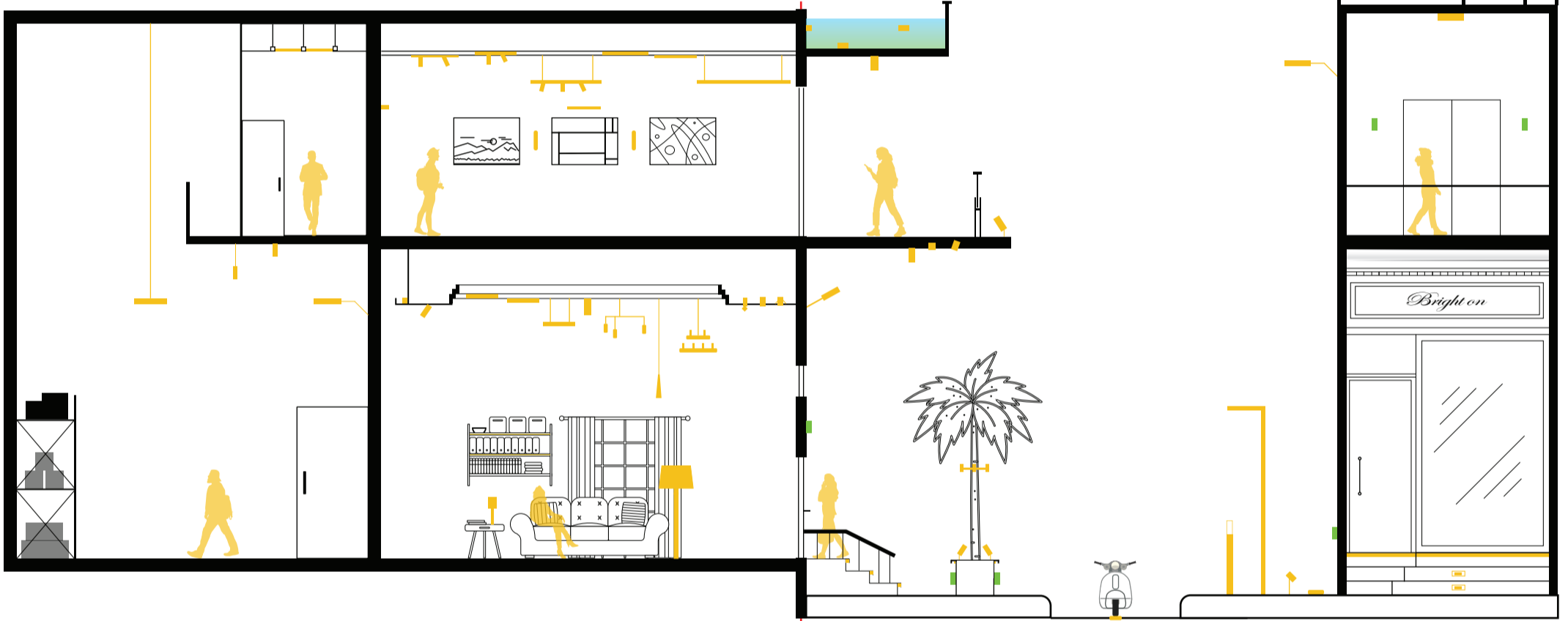
Dimmable

Brighton luminaires Map

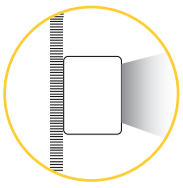
- Brighton Luminaires Range
- Selected Luminaire Default placement

Indoor

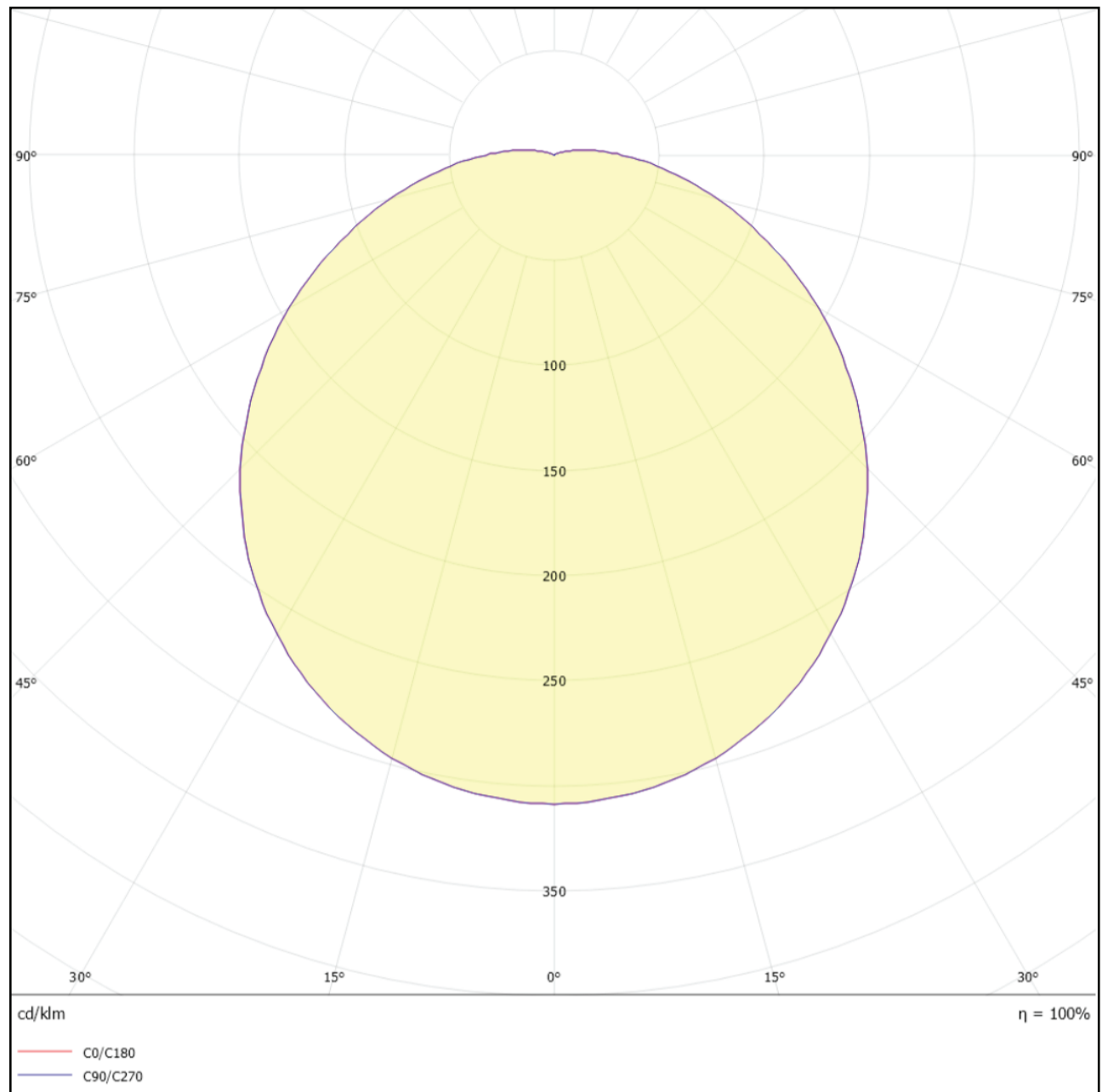
Outdoor



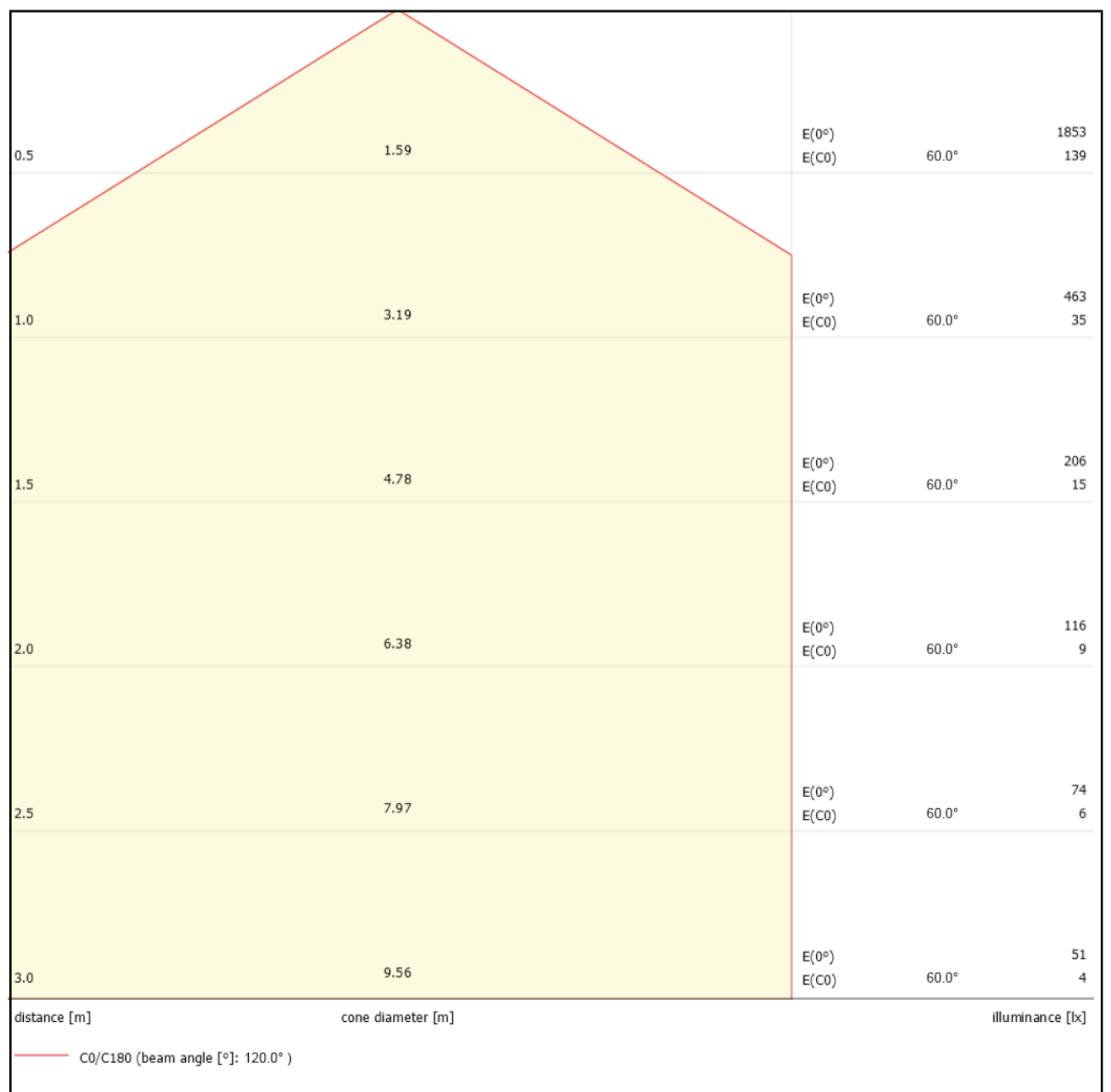
Accessories

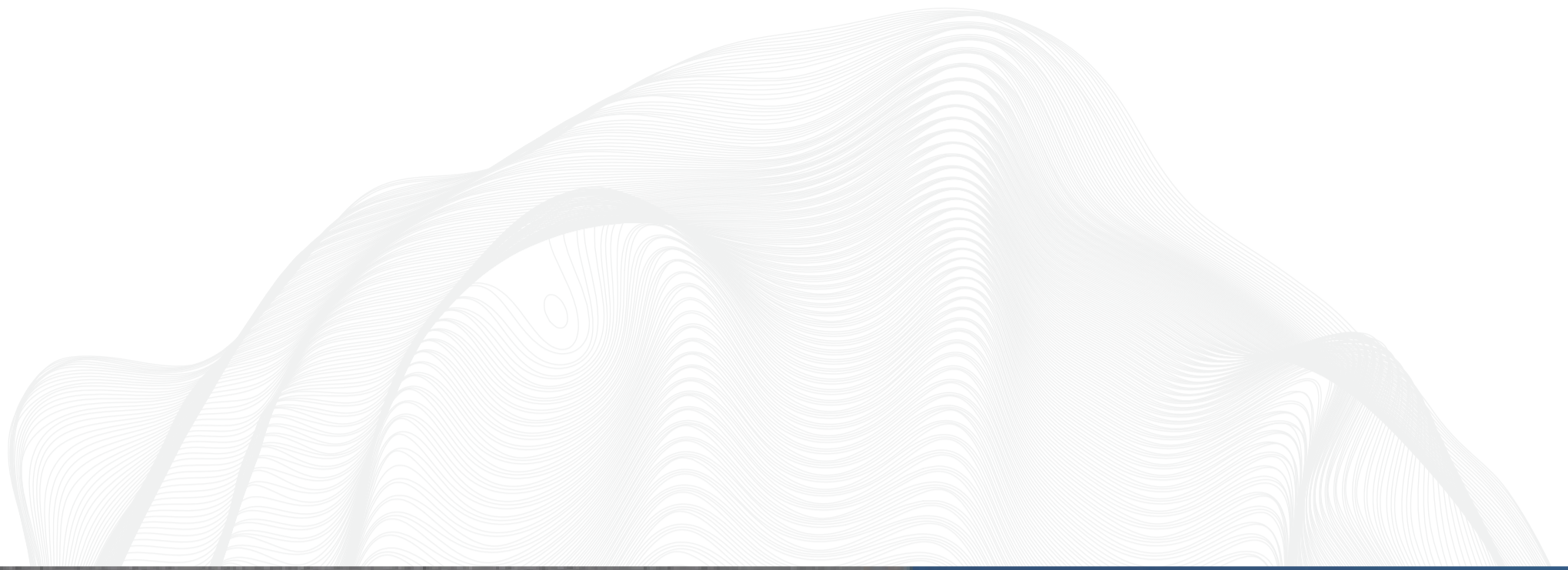


15 Watt 120° Flood
Polar Curve



15 Watt 120° Flood
Cone Diagram





Luke P LP

BRIGHTON  N

