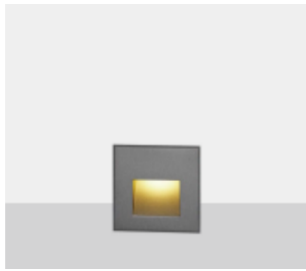


Daku

Wall Recessed Floor Washer



DESCRIPTION

Wall recessed light featuring high light power and efficacy. Daku is a product that is suitable to illuminate pathways, steps with different dimensions and wattage.



Illumination Data

Color temperature:	3000K 4000K 5000K
Lumen output:	39 LM
CRI	80
Beam angle	Asymmetric 45°

Physical Specification

Material Finish	Die cast aluminium
Diffuser	Glass
Optics	Tempered With optical structure
Ingress protection (IP)	65
Impact Protection (IK)	07

Electric Characteristics

Light	LED Built in
Source LED	SMD
Type Power	3.1 Watt
P.F	>0.9

Installation

Installation	Wall Recessed
Wiring	Product complete with electronic components

Luminaire Body Finish Color

Grey Ral 9006	
Black Ral 9005	

Certificate & Warranty

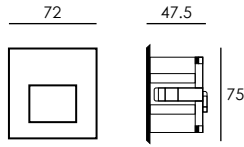
Certification	CB CE LM79 LM80 TM21 Photo biological
Lifetime expectancy	50.000 hrs
Warranty duration	Up to 5 years



Daku

Wall Recessed Floor Washer

Dimensions & Specs



All dimensions in these sketches are in millimeters*

Dimensions & specs of luminaires

Dim	Length	Width	Depth
1	72mm	72mm	47.5mm

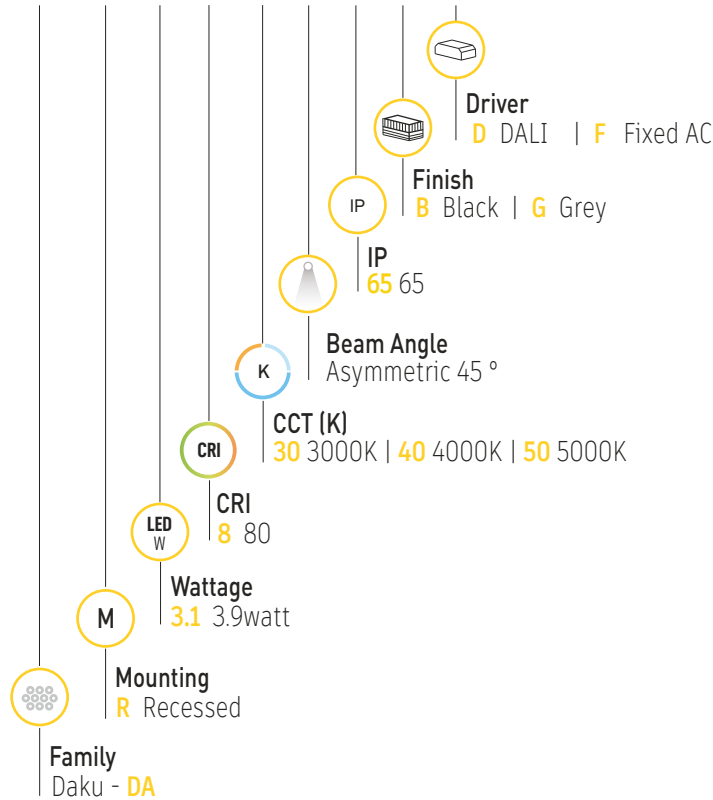
Specs

Wattage (W)	Lumen (lm)
3.1 watt	39lm

All dimensions in this schedule table are in millimeters*

Product coding system

BR - DA R 3.1 .8 XX 45 65 X - X



BR - DA R 3.1 .8 XX 45 65 X - X

Configure luminaire specs & send us the code for order confirmation



Optional Application



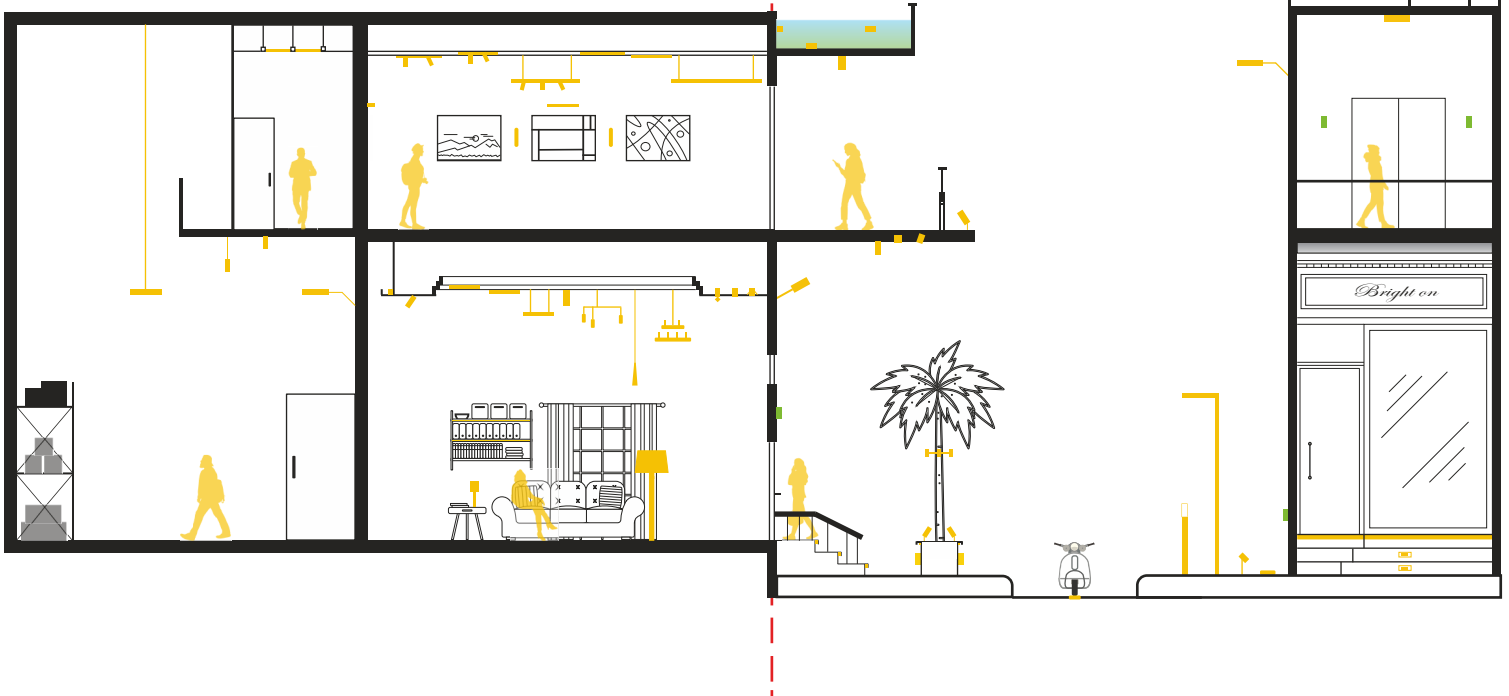
Dimmable

Brighton luminaires Map

- Brighton Luminaires Range
- Selected Luminaire Default placement

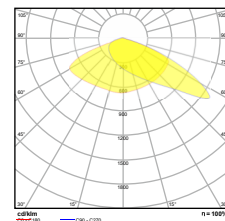
Indoor

Outdoor



Accessories

Beam Angle





Daku

BRIGHTON

