

Aster

Wall Mounted



DESCRIPTION

The Aster is a robust wall luminaire with a shielded light source that is optionally available with light emission on one or two sides. Such kind of luminaire is suitable for many applications around the house & in public areas.



Illumination Data

Color temperature:	3000K 4000K 5000K
Lumen output:	450 LM
CRI	80
Beam angle	100° Flood

Physical Specification

Material Finish	Die cast aluminium
Diffuser	Glass
Optics	Tempered With optical structure
Ingress protection (IP)	65
Impact Protection (IK)	07

Electric Characteristics

Light	LED Built in
Source LED	SMD
Type Power	4.9 Watt
P.F	>0.9

Installation

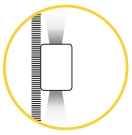
Installation	Surface Wall Mounted
Wiring	Product complete with electronic components

Luminaire Body Finish Color

White Ral 9003	
Grey Ral 9006	
Black Ral 9005	

Certificate & Warranty

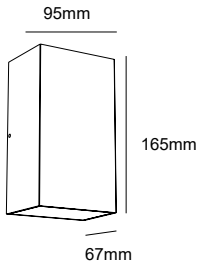
Certification	CB CE LM79 LM80 TM21 Photo biological
Lifetime expectancy	50.000 hrs
Warranty duration	Up to 5 years



Aster

Wall Mounted

Dimensions & Specs



All dimensions in these sketches are in millimeters*

Dimensions & specs of luminaires

Dim	Length	Width	Height
1	95mm	67mm	165mm

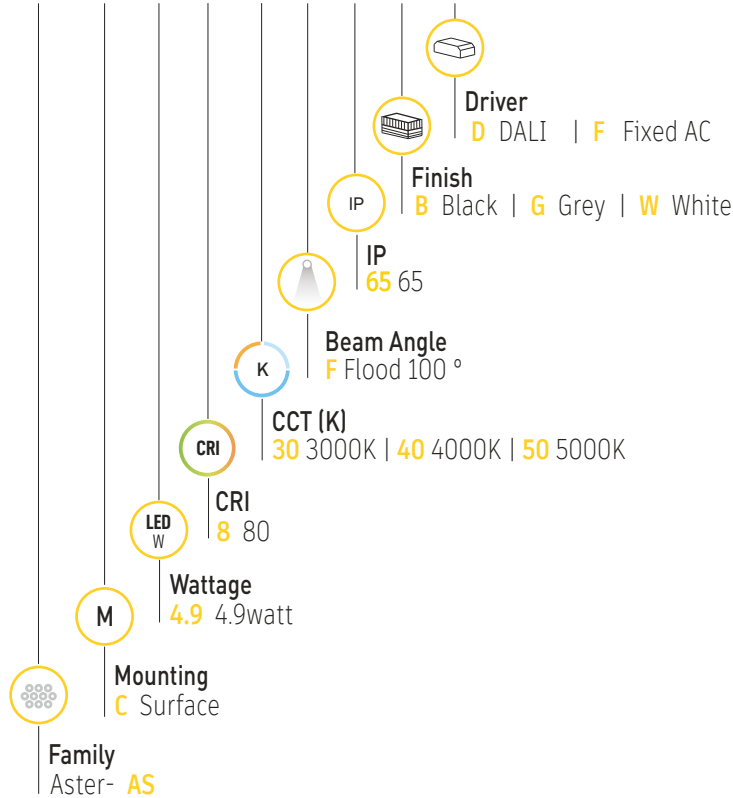
Specs

Wattage (W)	Lumen (lm)
4.9 watt	450lm

All dimensions in this schedule table are in millimeters*

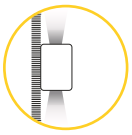
Product coding system

BR - ASC C 4.9 .8 XX F 65 X - X



BR - ASC C 4.9 .8 XX F 65 X - X

Configure luminaire specs & send us the code for order confirmation



Aster

Wall Mounted

Optional Application



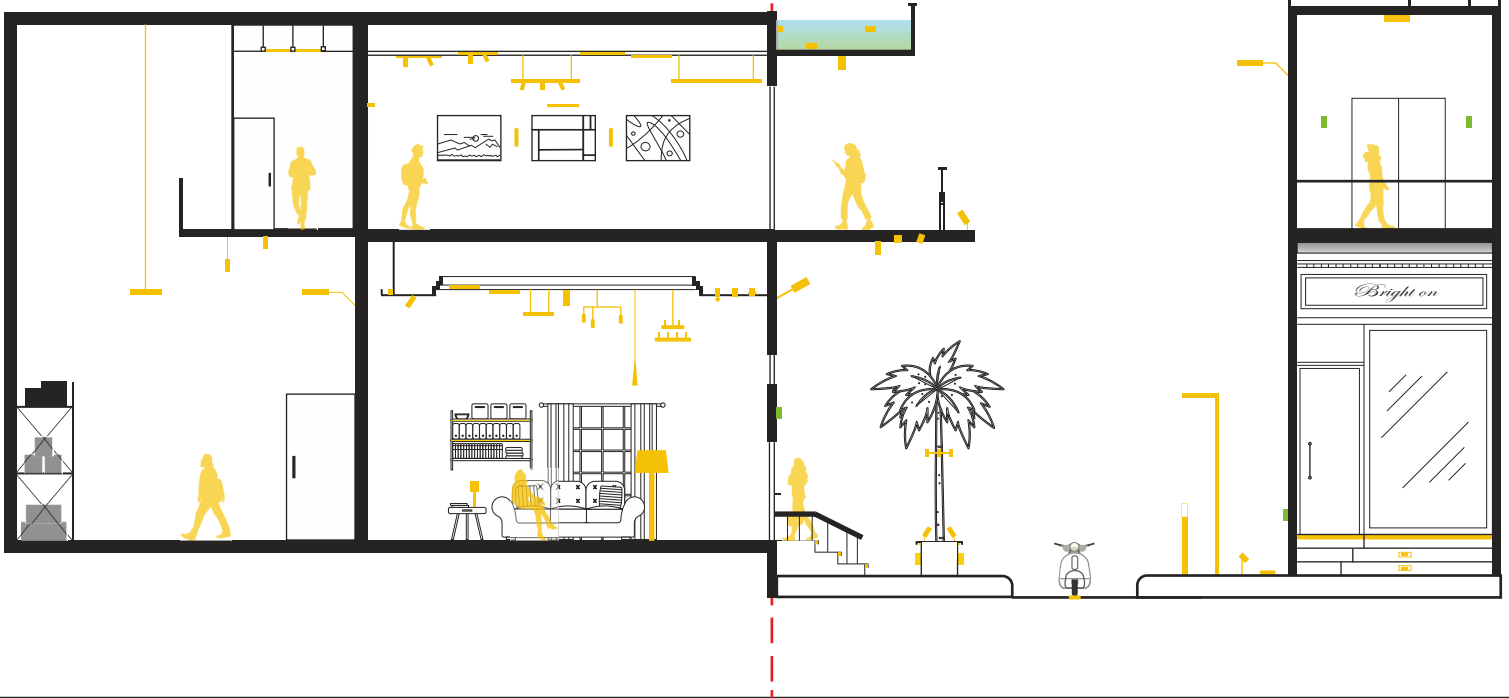
Dimmable

Brighton luminaires Map

- Brighton Luminaires Range
- Selected Luminaire Default placement

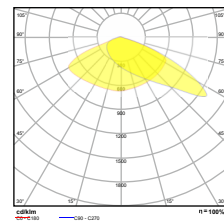
Indoor

Outdoor



Accessories

Beam Angle





Aster

BRIGHTON

