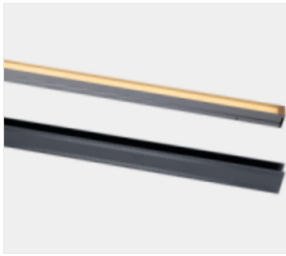




# Amity

Linear Inground Uplighter



## DESCRIPTION

Inground recessed linear light featuring high light power and efficacy. Amity is a product that is suitable to illuminate large wall spaces with different dimensions and wattage.



Driver



LED Chip



## Illumination Data

<b>Color temperature:</b>	2700K   3000K   4000K   5000K
<b>Lumen output:</b>	830LM/Mtr.
<b>CRI</b>	80
<b>Beam angle</b>	120° Wide
<b>UGR</b>	<19

## Physical Specification

<b>Material Finish</b>	Die cast aluminium
<b>Diffuser</b>	Polycarbonate
<b>Optics</b>	Clear   Opal
<b>Ingress protection (IP)</b>	67

## Electric Characteristics

<b>Light</b>	LED Built in
<b>Source LED</b>	SMD
<b>Type Power</b>	16 Watt/Mtr.
<b>P.F</b>	>0.9

## Installation

<b>Installation</b>	Floor Recessed
<b>Wiring</b>	Product complete with electronic components

## Luminaire Body Finish Color

<b>Grey</b>	
<b>Black</b>	

## Certificate & Warranty

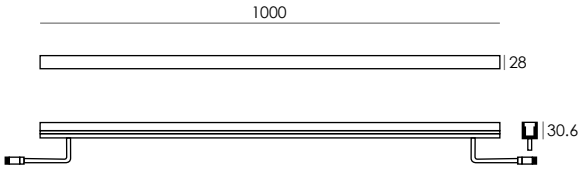
<b>Certification</b>	CB   CE   LM79   LM80 TM21   Photo biological
<b>Lifetime expectancy</b>	50.000 hrs
<b>Warranty duration</b>	Up to 5 years



# Amita

Linear Inground Uplighter

## Dimensions & Specs



All dimensions in these sketches are in millimeters\*

## Dimensions of luminaires

Dim	Length	Width	Height
1	1000mm	28mm	30.6mm

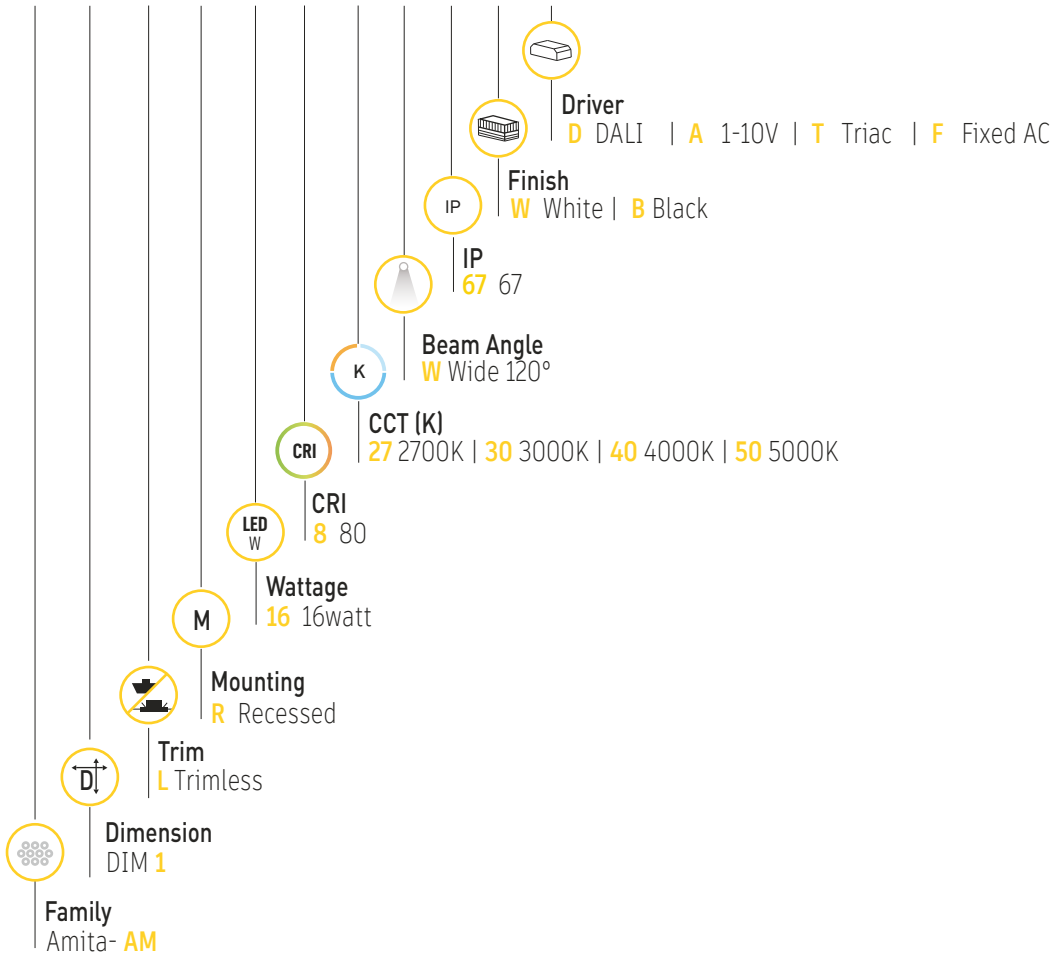
\*All dimensions in this schedule table are in millimeters\*

## Specs

Dimension (mm)	Wattage (W)	Lumen (lm)
Dim1	16 W/Mtr.	830lm/Mtr.

### BR-AM 1 L R 16.8 XX12067 X - X

## Product coding system



## BR - AM 1 L R 16.8 XX 120 67 X - X

Configure luminaire specs & send us the code for order confirmation



# Amita

Linear Inground Uplighter

## Optional Application



Dimmable

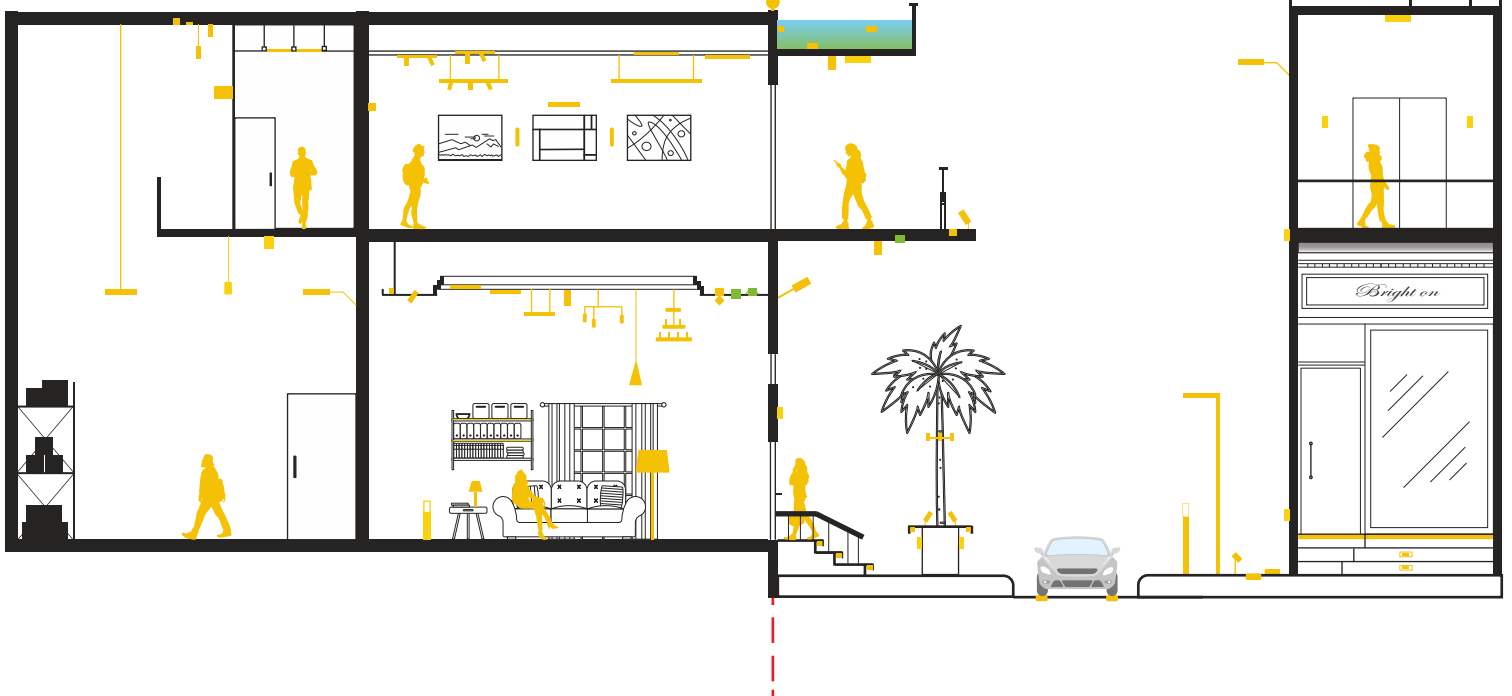
## Brighton Luminaires Map

■ Brighton Luminaires Range

■ Selected Luminaire Default placement

Indoor

Outdoor

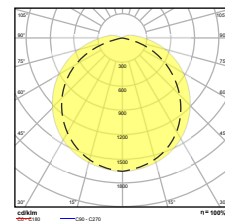


## Accessories



01. Inground Profile

## Beam Angle





Amita

---

BRIGHTON





Amita

---

BRIGHTON

