



DESCRIPTION



single emission led strip for indoor/outdoor application.
the super efficient LED source with an extra wide flood light distribution is coming with a variety of CCTs and IPs.



Illumination Data

Color temperature:	3000K 4000K 5000K 6500K
Lumen per meter:	650 LM 770LM 1100LM 1540LM
CRI	80
Beam angle	120° Flood

Physical Specification

Ingress protection (IP)	20 67
--------------------------------	---------

Electric Characteristics

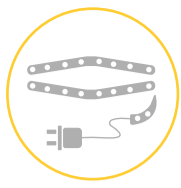
Light source	LED Built in
LED type	SMD
Power per meter	4.8 Watt 7 Watt 10 Watt 14 Watt
P.F	>0.9
LED chip	Lumileds
Driver	Philips Meanwell

Installation

Installation	Surface
Wiring	Product complete with electronic components

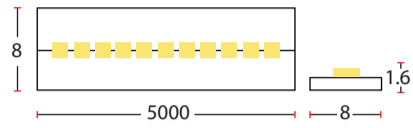
Certificate & Warranty

Certification	CB CE LM79 LM80 TM21 Photo biological
Lifetime expectancy	50.000 hrs
Warranty duration	Up to 5 years



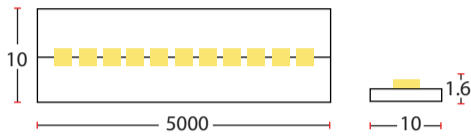
Strip Flexibles

Dimensions & Specs



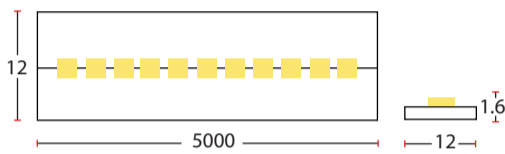
Dim 1

All dimensions in these sketches are in millimeters



Dim 2

All dimensions in these sketches are in millimeters



Dim 3

Dimensions of luminaires

Dim	Width	Height	Reel Length
1	8mm	1.6mm	5 meter
2	10mm	1.6mm	5 meter
3	12mm	1.6mm	5 meter

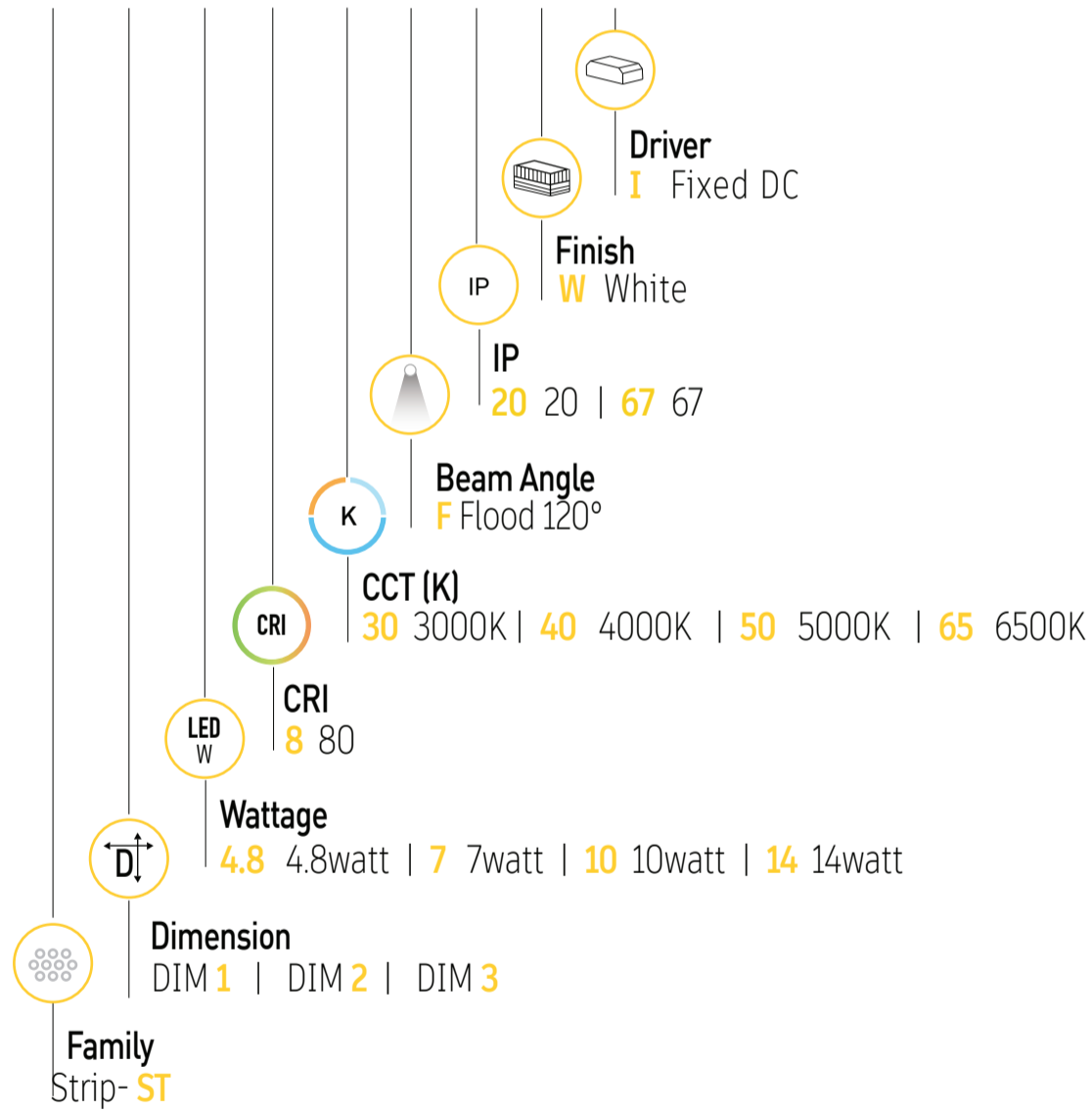
Specs

Dimension (mm)	Wattage/meter (W/m)	lumen/meter (lm/m)
Dim1	4.8 watt	650lm
	10 watt	1100lm
Dim2	7 watt	770lm
	10 watt	1100lm
	14 watt	1540lm
Dim3	7 watt	770lm
	14 watt	1540lm

All dimensions in this schedule table are in millimeters

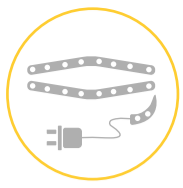
BR- ST X XX.8 XX X XXW - I

Product coding system



BR - ST X XX.8 XX X XX W - I

Configure luminaire specs & send us the code for order confirmation



Optional Application



RGB



Dimmable

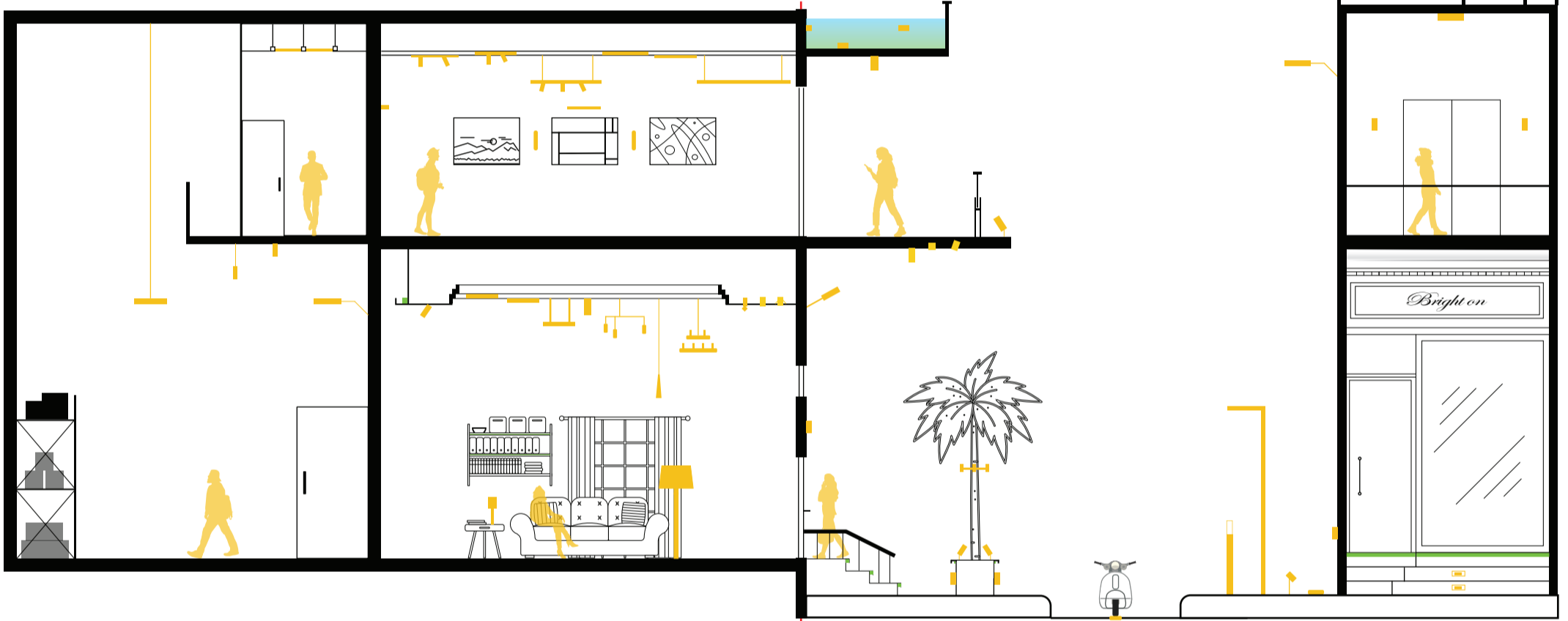
Brighton luminaires Map

■ Brighton Luminaires Range

■ Selected Luminaire Default placement

Indoor

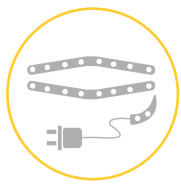
Outdoor



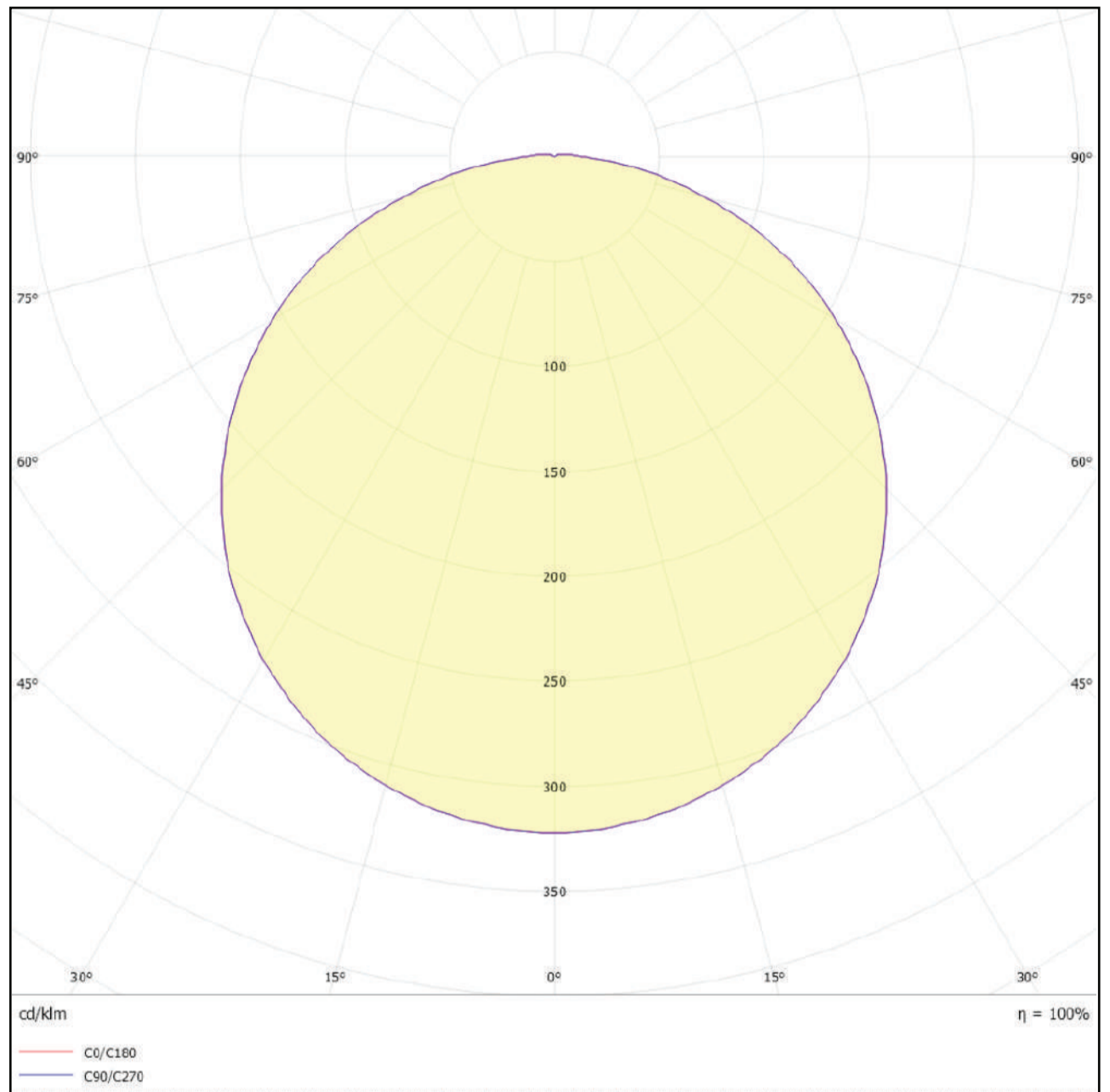
Accessories



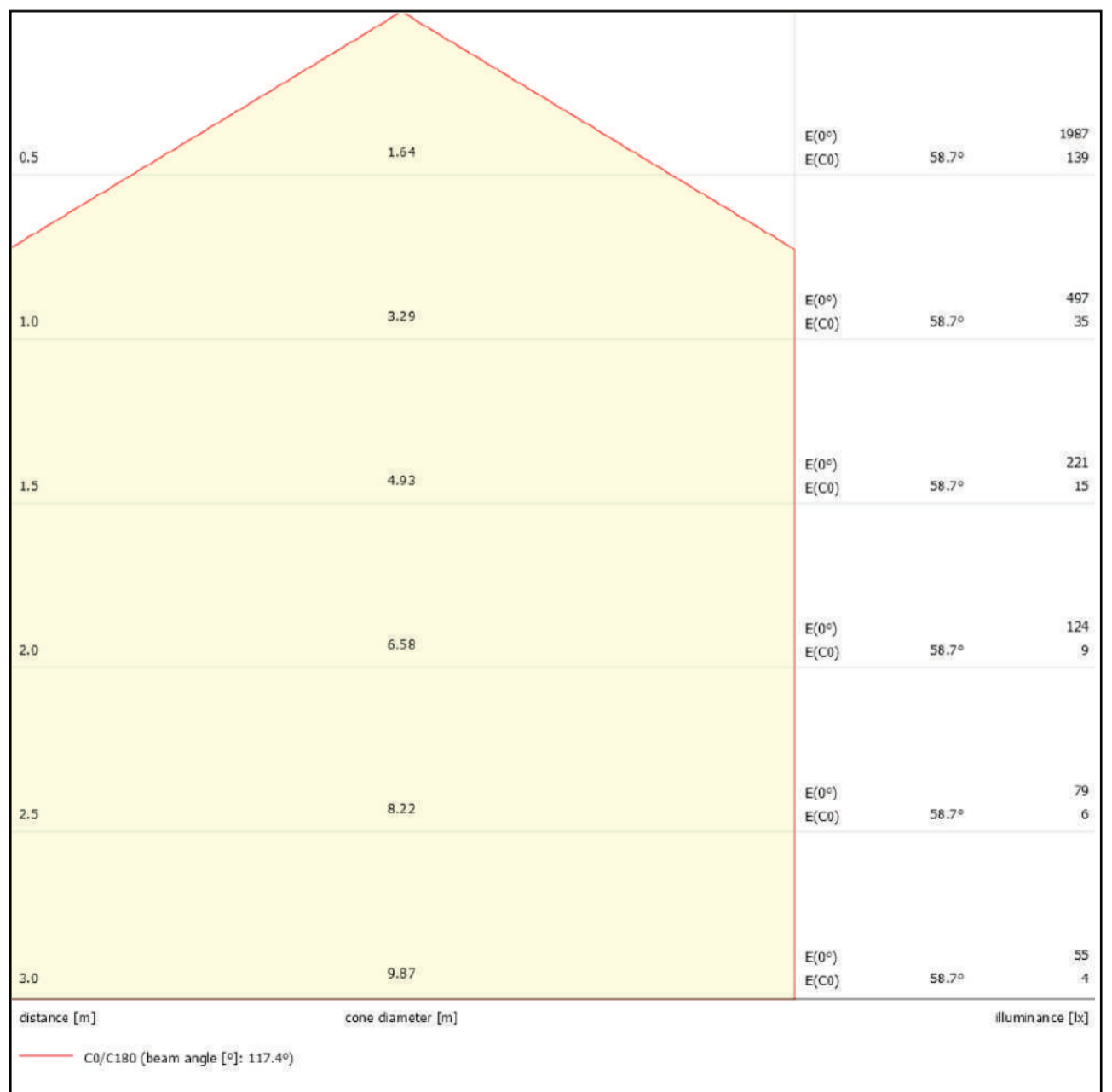
01. Transparent Clip



14 Watt 120° Beam Angle
Polar Curve



14 Watt 120° Beam Angle
Cone Diagram



Strip ST

BRIGHTON



Strip ST

BRIGHTON

