



## DESCRIPTION

Solo Bollard come with a single or double light unit. ideal to be used as path lighting as the indirect position of the led avoids direct exposure and dazzle, resulting in a dark sky friendly lighting solution.



Driver



LED Chip



## Illumination Data

<b>Color temperature:</b>	3000K   4000K
<b>Lumen output:</b>	1000 LM
<b>CRI</b>	80
<b>Beam angle</b>	95° Flood

## Physical Specification

<b>Material Finish</b>	Die cast aluminium
<b>Diffuser</b>	Poly carbonate
<b>Optics</b>	LENS
<b>Ingress protection (IP)</b>	65
<b>Impact Protection (IK)</b>	08

## Electric Characteristics

<b>Light source</b>	LED Built in
<b>LED type</b>	SMD
<b>Power</b>	10 Watt   2x10 Watt
<b>P.F</b>	>0.9
<b>LED chip</b>	Lumileds
<b>Driver</b>	Osram

## Installation

<b>Installation</b>	Floor surface monunt
<b>Wiring</b>	Product complete with electronic components

## Luminaire Body Finish Color

<b>Black Ral 9005</b>	
<b>Grey Ral 9006</b>	

## Certificate & Warranty

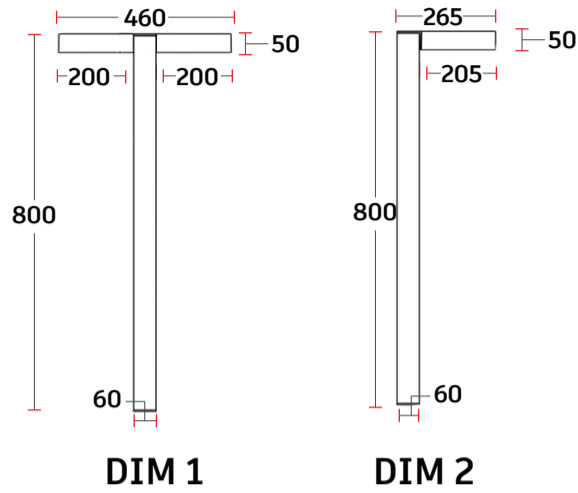
<b>Certification</b>	CB   CE   LM79   LM80 TM21   Photo biological
<b>Lifetime expectancy</b>	50.000 hrs
<b>Warranty duration</b>	Up to 5 years



# Solo

Bollard

## Dimensions & Specs



\*All dimensions in these sketches are in millimeters\*

## Dimensions of luminaires

Dim	Type	Length	Height
1	single	460mm	800mm
2	Double	265mm	800mm

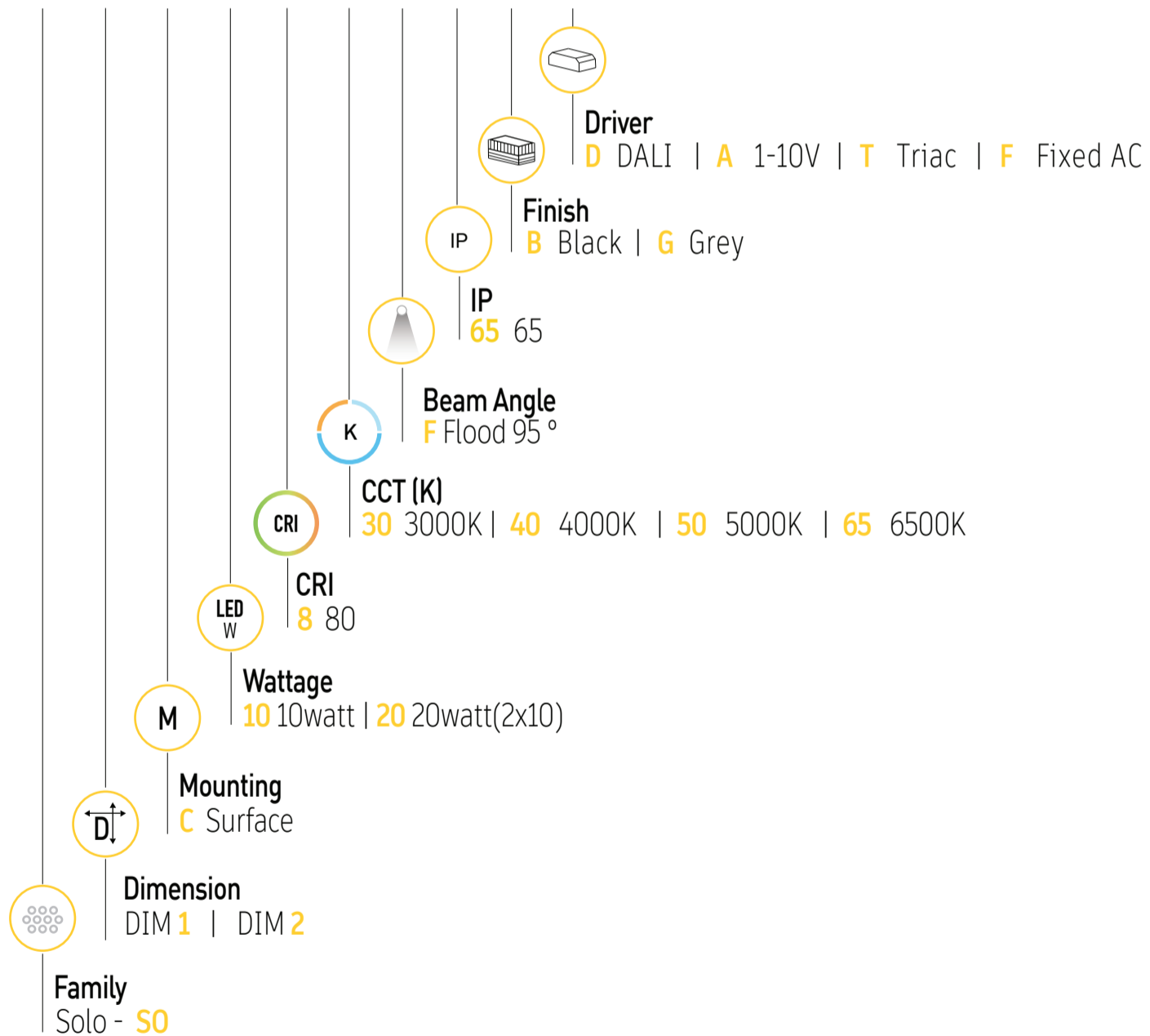
## Specs

Wattage (W)	lumen (lm)
30 watt	4050lm
40 watt	5400lm

\*All dimensions in this schedule table are in millimeters\*

## Product coding system

BR - SO X C XX.8 XX F 65 X - X



BR - SO X C XX.8 XX F 65 X - X

Configure luminaire specs & send us the code for order confirmation



### Optional Application



RGB



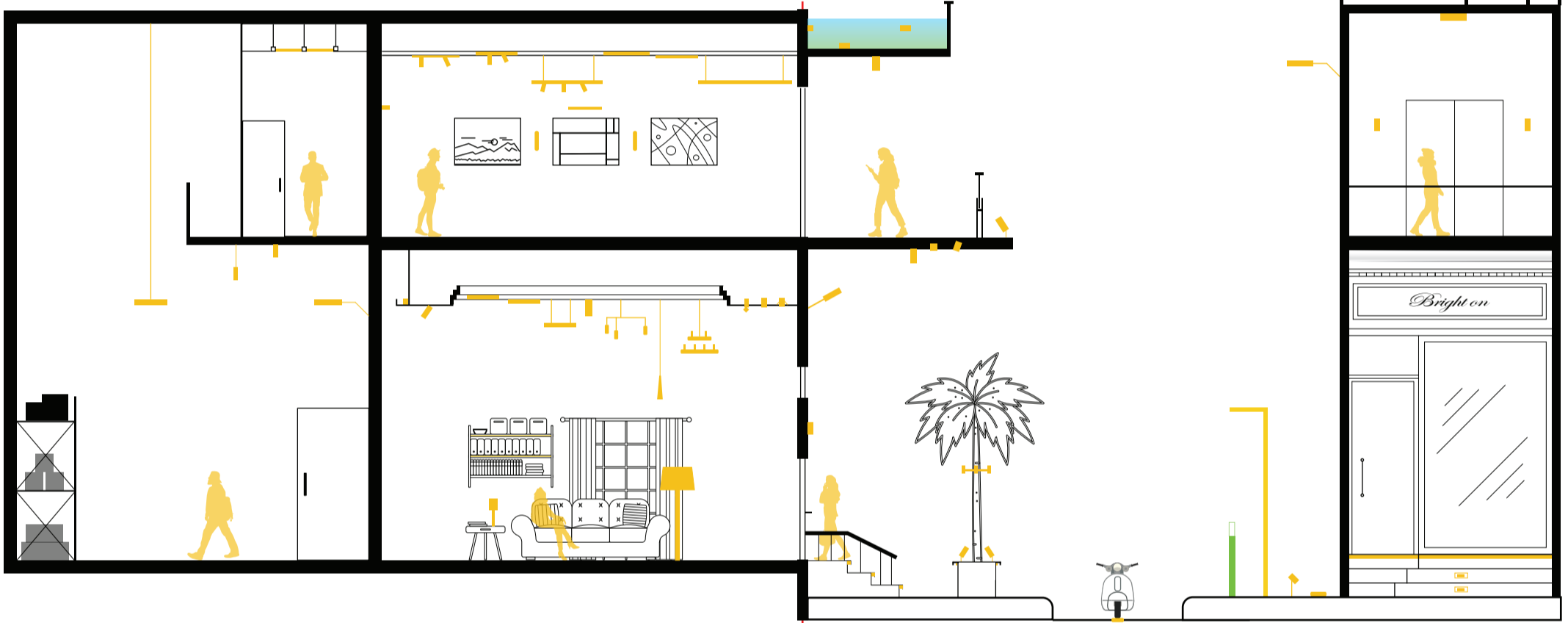
Dimmable

### Brighton luminaires Map

- Brighton Luminaires Range
- Selected Luminaire Default placement

Indoor

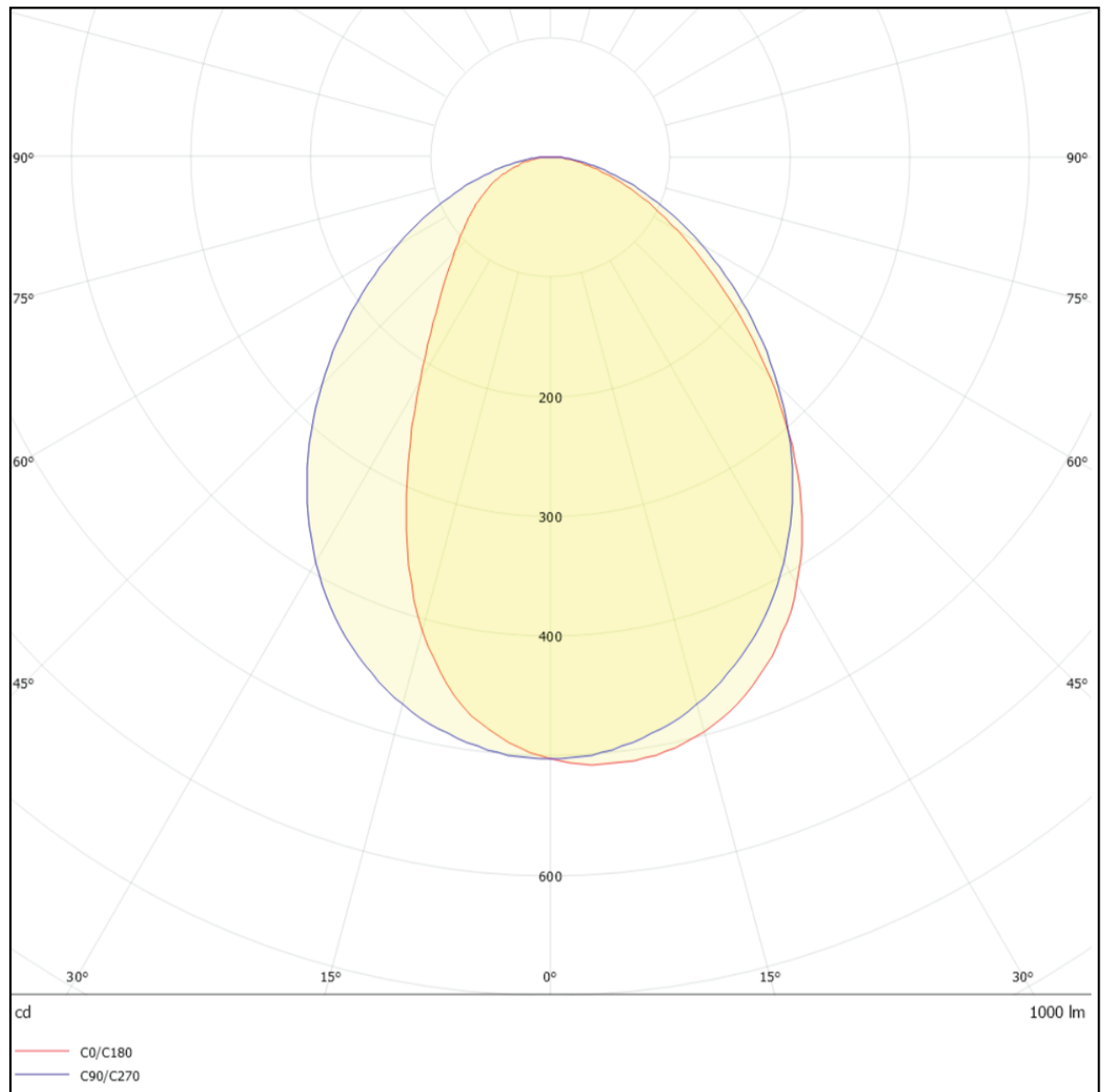
Outdoor



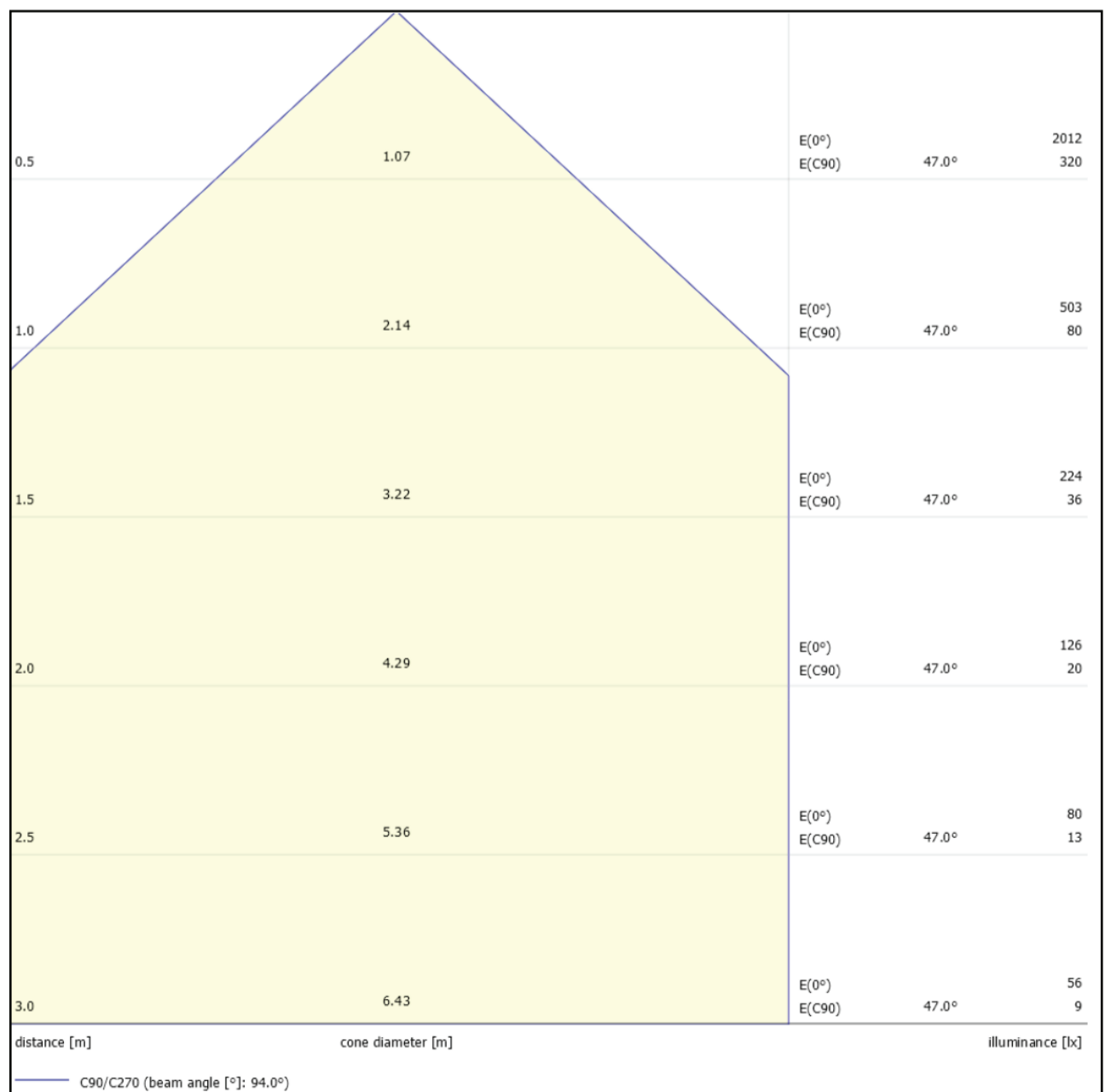
Accessories

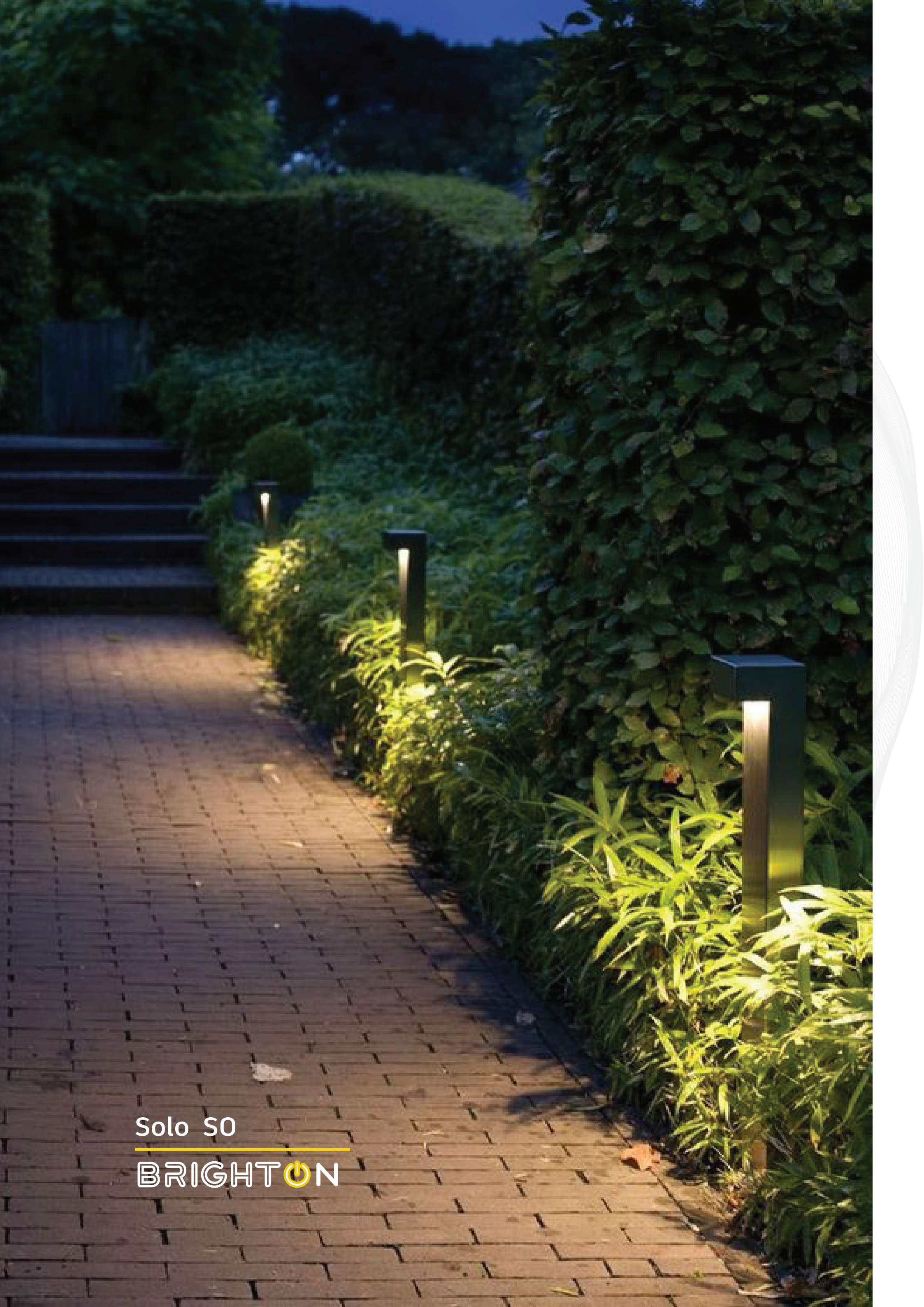


10 Watt 95° Flood  
Polar curve



10 Watt 95° Flood  
Cone Diagram





Solo 50

BRIGHTON