

DESCRIPTION

A robust surrounding frame wall mounted made of aluminum shell & glass diffuser. Such luminaires facilitate a wide range of Indoors & outdoors applications.

PHILIPS

Driver

LUMILEDS

LED Chip



Illumination Data

Color temperature:	3000K 4000K
Lumen output:	1200 LM
CRI	80
Beam angle	360° Special

Physical Specification

Material Finish	Die cast aluminium
Diffuser	Polycarbonate
Optics	Opal
Ingress protection (IP)	65
Impact Protection (IK)	08

Electric Characteristics

Light source	LED Built in
LED type	SMD
Power	15 Watt
P.F	>0.9
LED chip	Lumileds
Driver	Philips

Installation

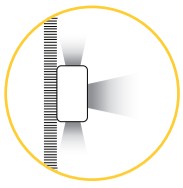
Installation	Surface Wall Mounted
Wiring	Product complete with electronic components

Luminaire Body Finish Color

Grey Ral 9006	
Black Ral 9005	

Certificate & Warranty

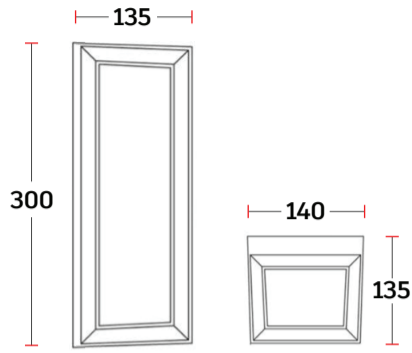
Certification	CB CE LM79 LM80 TM21 Photo biological
Lifetime expectancy	50.000 hrs
Warranty duration	Up to 5 years



Ray

Wall Mounted

Dimensions & Specs



DIM 1

All dimensions in these sketches are in millimeters*

Dimensions & specs of luminaires

Dim	Length	Width	Height
1	125mm	80mm	300mm

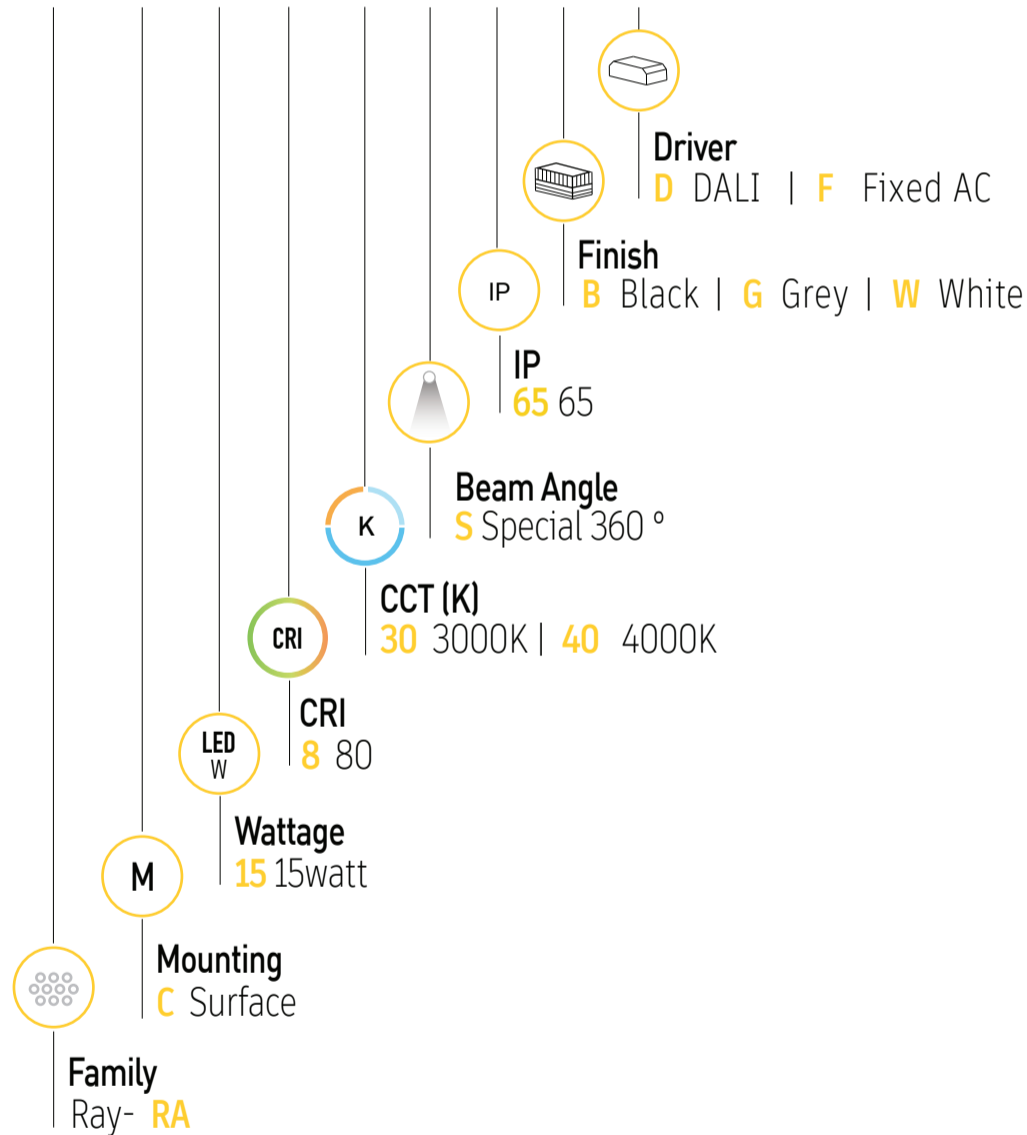
All dimensions in this schedule table are in millimeters

Specs

Wattage (W)	lumen (lm)
15 watt	1200lm

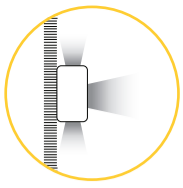
Product coding system

BR - RA C 15.8 XX S 65 X - X



BR - RA C 15.8 XX S 65 X - X

Configure luminaire specs & send us the code for order confirmation



Ray

Wall Mounted

Optional Application



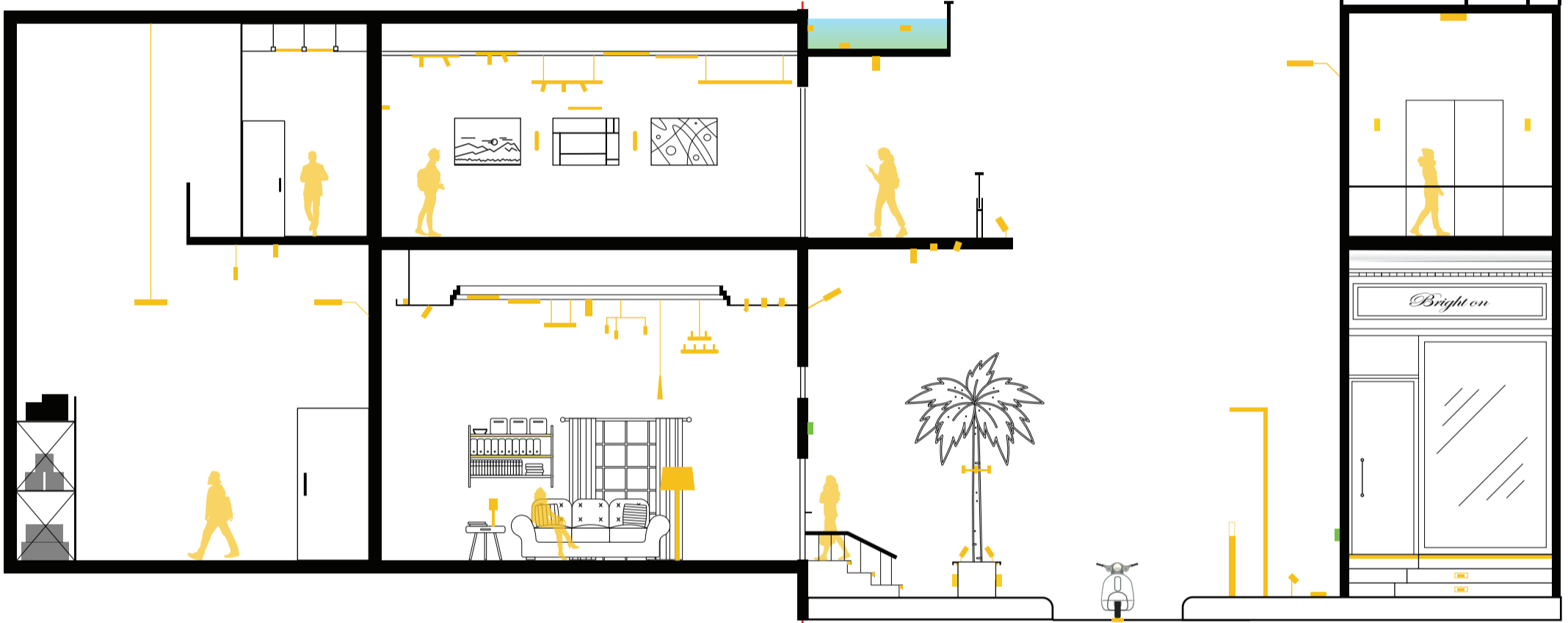
Dimmable

Brighton luminaires Map

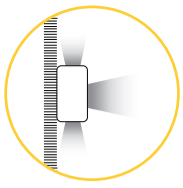
- Brighton Luminaires Range
- Selected Luminaire Default placement

Indoor

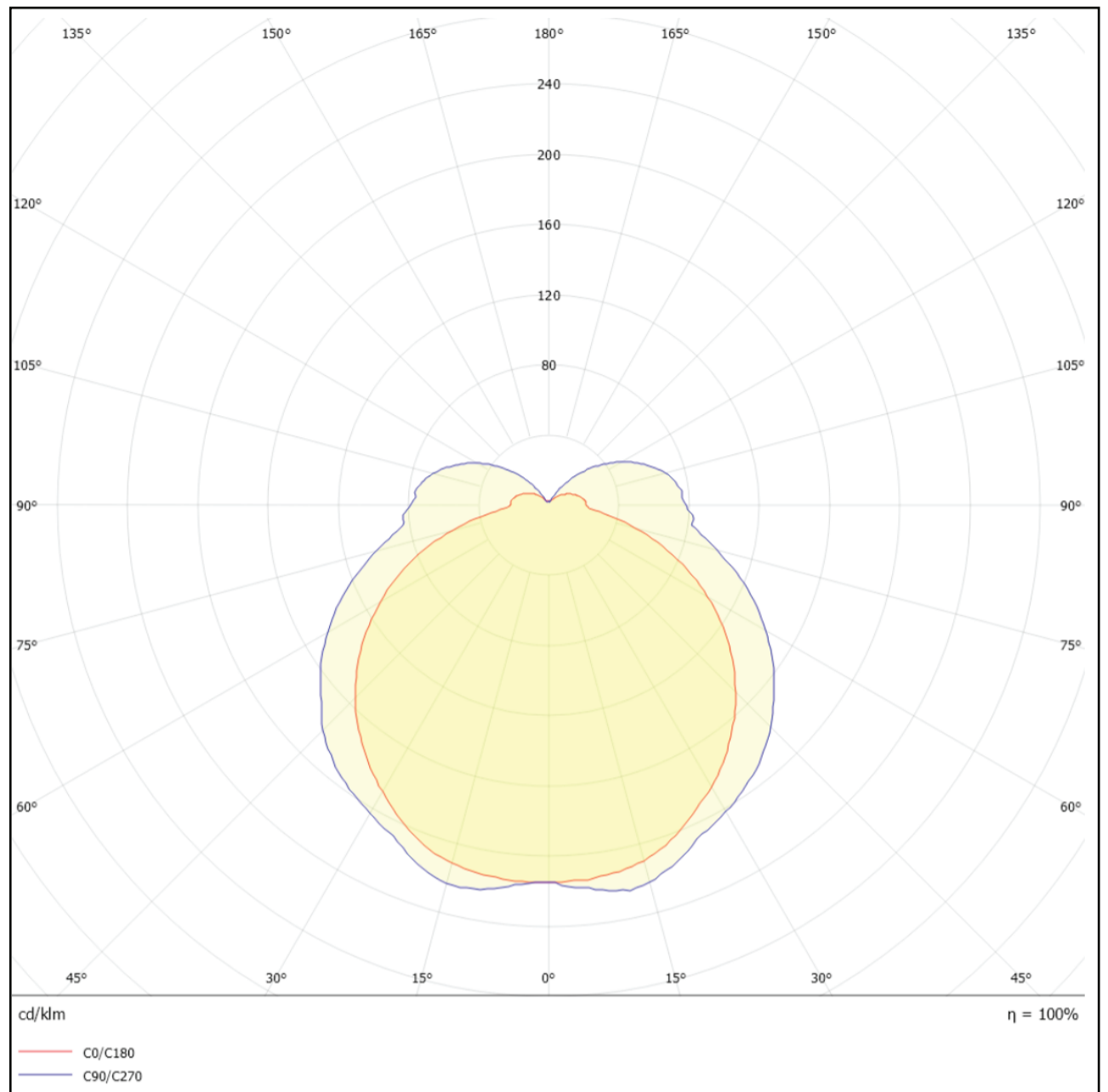
Outdoor



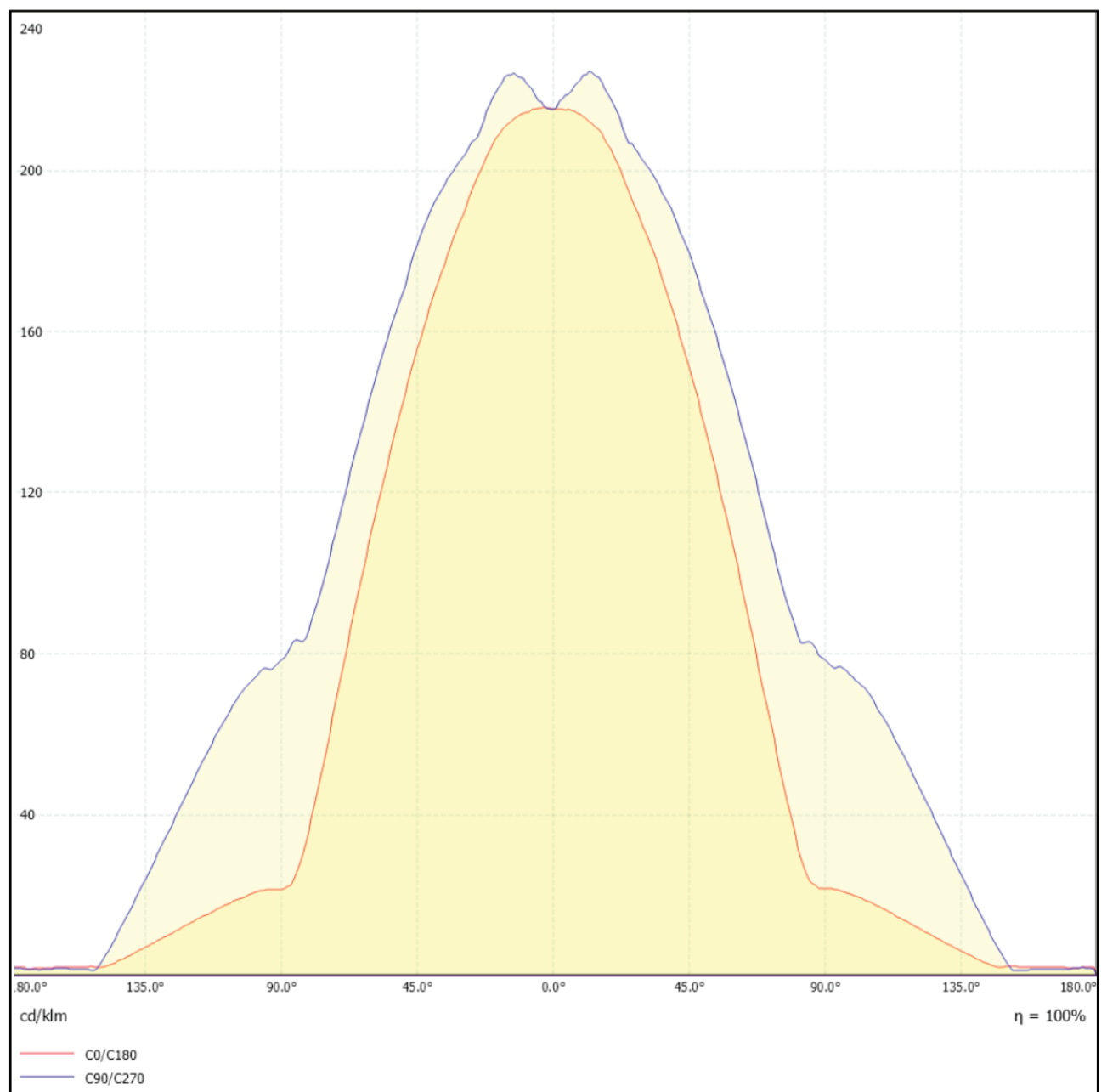
Accessories



360° Special Polar Curve



360° special Cartesian Diagram



Ray RA

BRIGHTON

