



## DESCRIPTION

Classic die-cast aluminum bollard. This helps present the high quality appearance required for architectural environments.

**OSRAM**

Driver

**LUMILEDS**

LED Chip



## Illumination Data

<b>Color temperature:</b>	3000K   4000K
<b>Lumen output:</b>	2000 LM
<b>CRI</b>	80
<b>Beam angle</b>	115° Flood

## Physical Specification

<b>Material Finish</b>	Die cast aluminium
<b>Diffuser</b>	Poly carbonate
<b>Optics</b>	LENS
<b>Ingress protection (IP)</b>	65
<b>Impact Protection (IK)</b>	08

## Electric Characteristics

<b>Light source</b>	LED Built in
<b>LED type</b>	COB
<b>Power</b>	20 Watt
<b>P.F</b>	>0.9
<b>LED chip</b>	Lumileds
<b>Driver</b>	Osram

## Installation

<b>Installation</b>	Floor surface monunt
<b>Wiring</b>	Product complete with electronic components

## Luminaire Body Finish Color

<b>Black Ral 9005</b>	
<b>Grey Ral 9006</b>	

## Certificate & Warranty

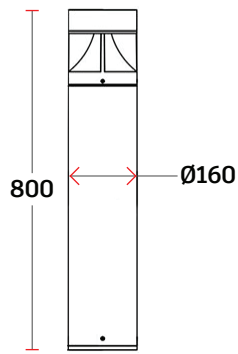
<b>Certification</b>	CB   CE   LM79   LM80 TM21   Photo biological
<b>Lifetime expectancy</b>	50.000 hrs
<b>Warranty duration</b>	Up to 5 years



# Quads

Bollard

## Dimensions & Specs



\*All dimensions in these sketches are in millimeters\*

## Dimensions of luminaires

Dim	Ø Diameter	Height
1	160mm	800mm

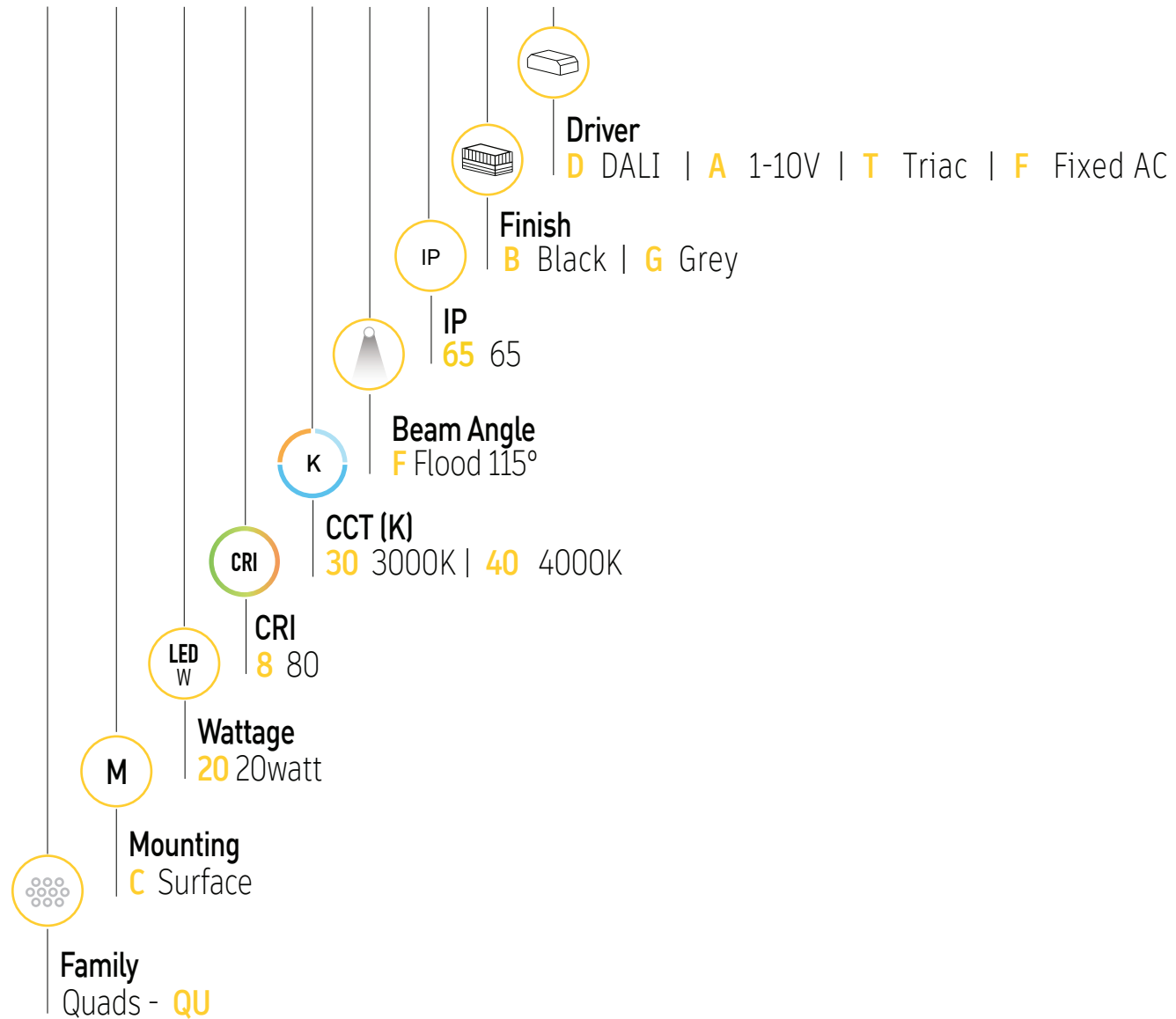
## Specs

Wattage (W)	lumen (lm)
20 watt	2000lm

\*All dimensions in this schedule table are in millimeters\*

## Product coding system

BR - QU C 20.8 XX F 65 X - X



BR - QU C 20.8 XX F 65 X - X

Configure luminaire specs & send us the code for order confirmation



# Quads

Bollard

## Optional Application



RGB



Dimmable

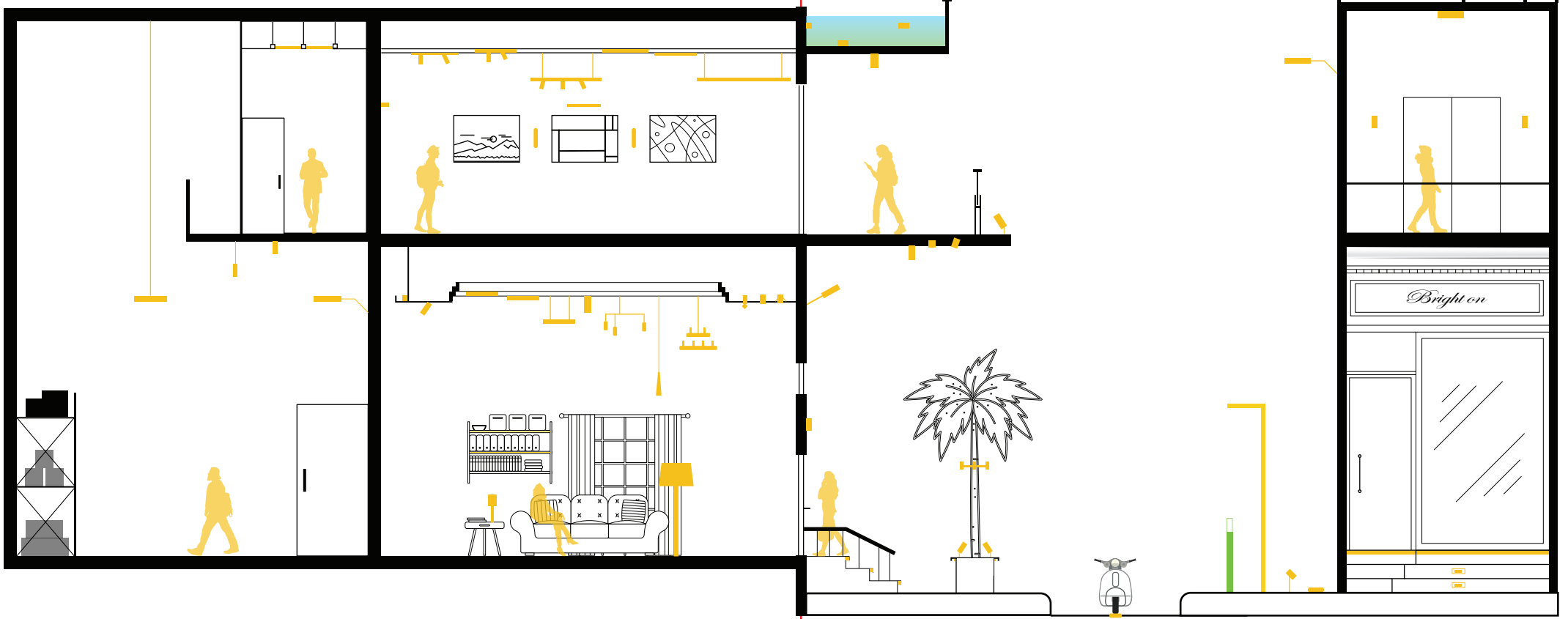
## Brighton luminaires Map

■ Brighton Luminaires Range

■ Selected Luminaire Default placement

Indoor

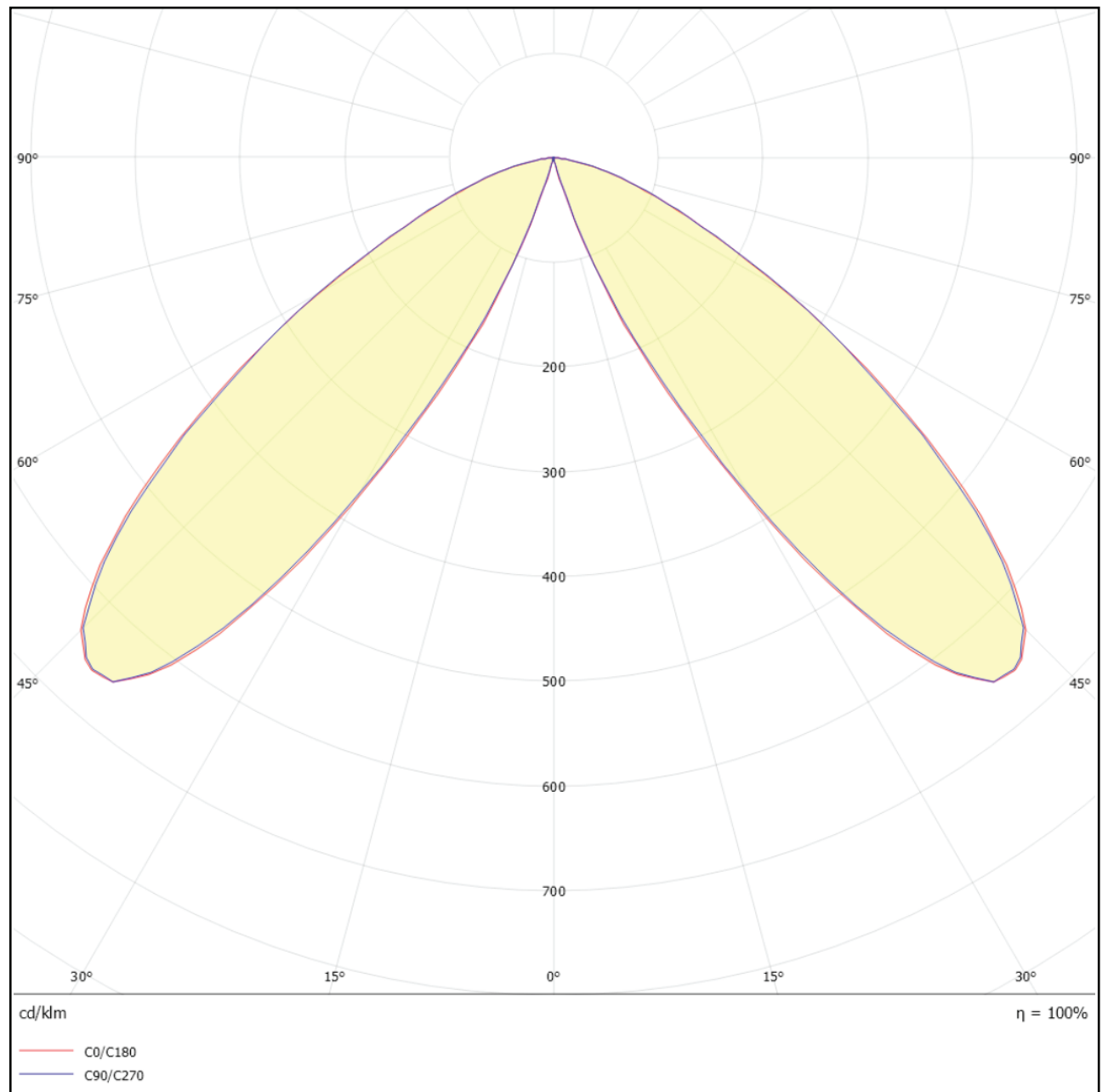
Outdoor



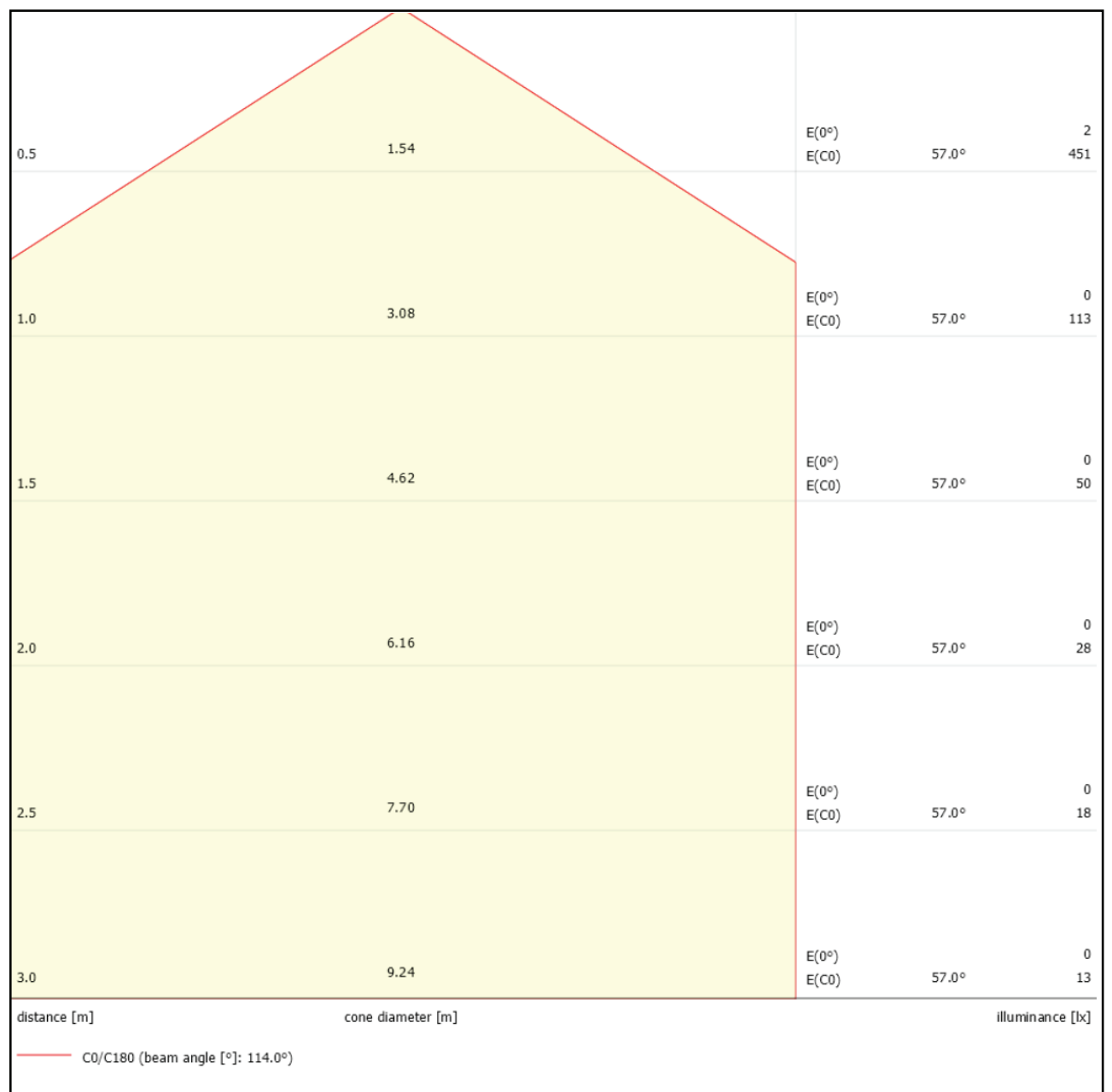
Accessories



20 Watt 115° Flood  
Polar curve



20 Watt 115° Flood  
Cone Diagram







Quads

---

BRIGHTON

