

DESCRIPTION



Thanks to use of powerful led arrays, these wall recessed/surface fixtures deliver an intense light effect to enhance the architectural character of your project and landscape.



PHILIPS



Driver

LED Chip



Illumination Data

Color temperature:	3000K 4000K
Lumen output:	240 LM 560 LM
CRI	80
Beam angle	Asymmetric

Physical Specification

Material Finish	Die cast aluminium
Diffuser	Glass
Optics	Clear
Ingress protection (IP)	65
Impact Protection (IK)	06

Electric Characteristics

Light source	LED Built in
LED type	SMD
Power	3 Watt 7 Watt
P.F	>0.9
LED chip	Lumileds
Driver	Philips Meanweall

Installation

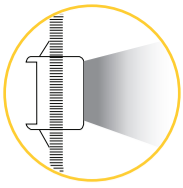
Installation	Surface / Recessed Wall Mounted
Wiring	Product complete with electronic components

Luminaire Body Finish Color

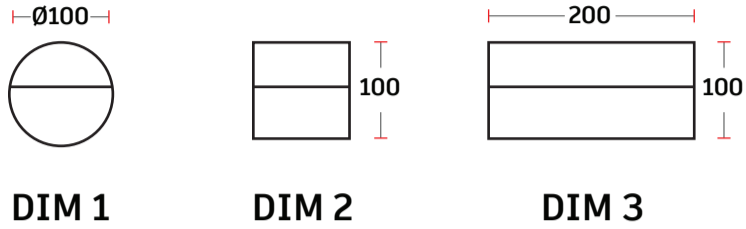
Grey Ral 9006	
Black Ral 9005	

Certificate & Warranty

Certification	CB CE LM79 LM80 TM21 Photo biological
Lifetime expectancy	50.000 hrs
Warranty duration	Up to 5 years



Dimensions & Specs



All dimensions in these sketches are in millimeters

Dimensions & specs of luminaires

Dim	Diameter	Thickness
1	100mm	30mm

Dim	Length	Width	Thickness
2	100mm	100mm	30mm
3	200mm	100mm	32mm

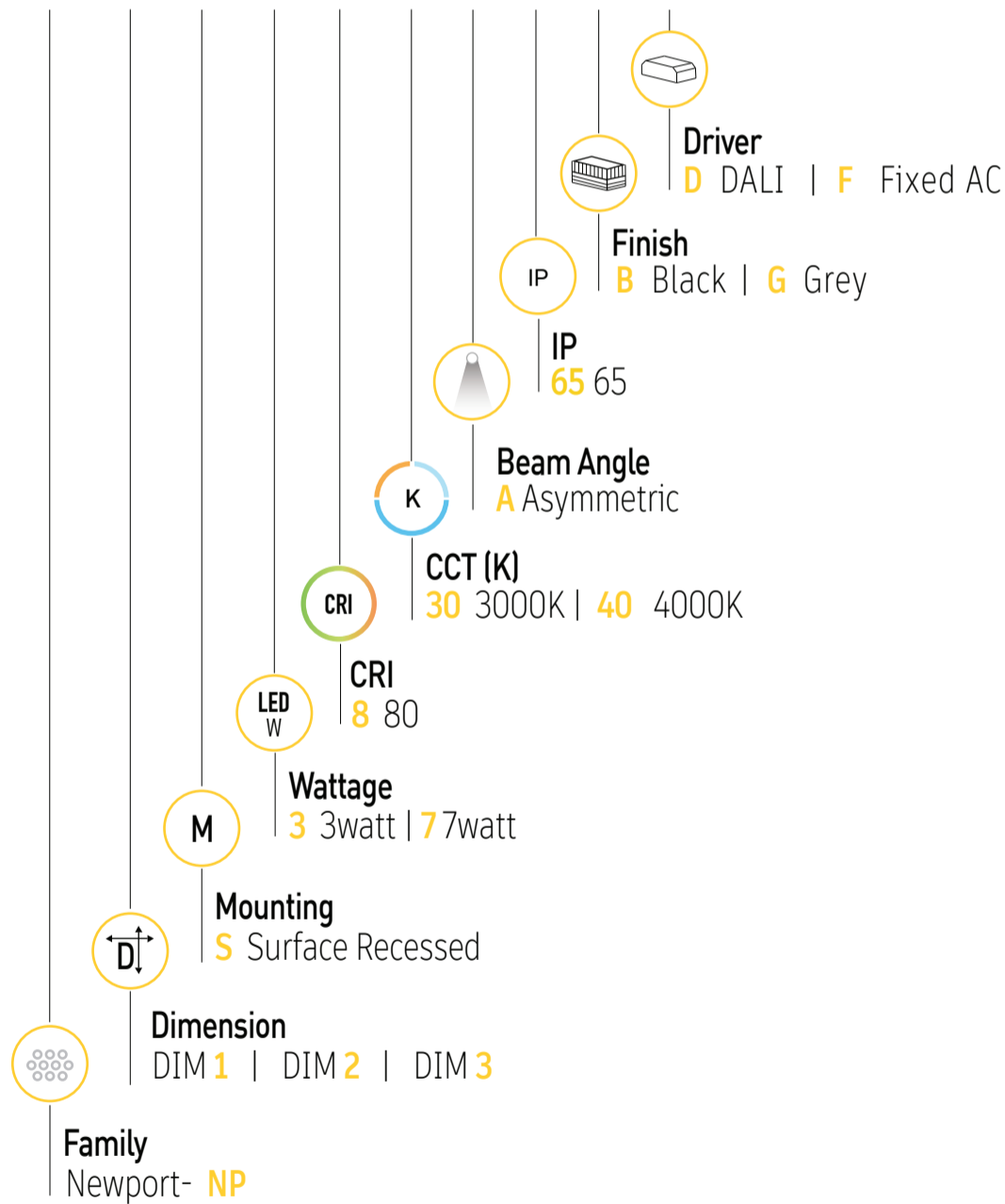
All dimensions in this schedule table are in millimeters

Specs

Dimension (mm)	Wattage (W)	lumen (lm)
Dim1	3 watt	240lm
Dim2	3 watt	240lm
Dim3	7 watt	560lm

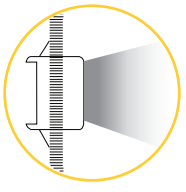
Product coding system

BR - NP X S X.8 XX A 65 X - X



BR - NP S X.8 XX A 65 X - X

Configure luminaire specs & send us the code for order confirmation



Optional Application



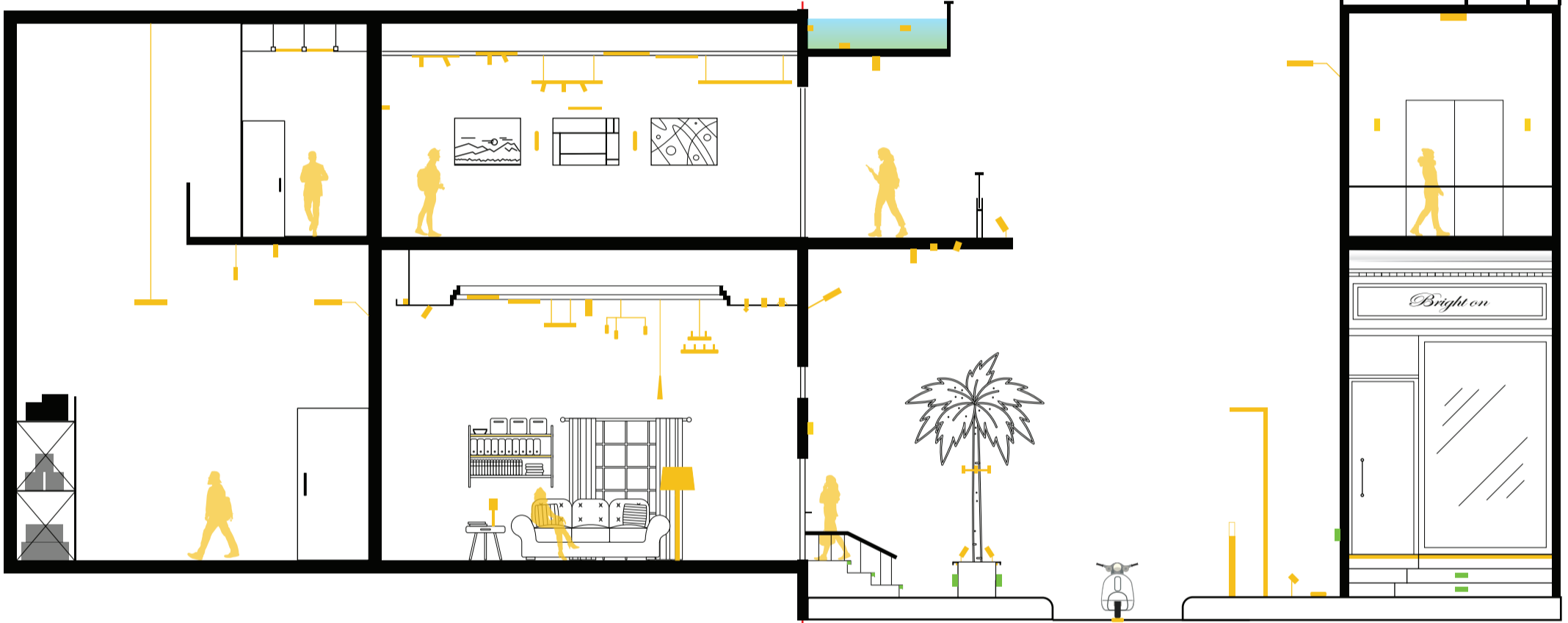
Dimmable

Brighton luminaires Map

- Brighton Luminaires Range
- Selected Luminaire Default placement

Indoor

Outdoor



Accessories

Newport NP

BRIGHTON



Newport NP

BRIGHTON

