



Fusion

Walk/Drive-over



DESCRIPTION

Fusion is an ideal luminaire for recessed ground application, also for drive-over use. Installation by means of a recess box supplied separately. It can be used to make straight lines.



Driver

LED Chip



Illumination Data

Color temperature:	3000K 4000K
Lumen output:	600 LM 1200 LM
CRI	80
Beam angle	90° flood

Physical Specification

Material Finish	Die cast aluminium
Diffuser	Tempered glass
Optics	None
Ingress protection (IP)	67
Impact Protection (IK)	10

Electric Characteristics

Light source	LED Built in
LED type	SMD
Power	6 Watt 12 Watt
P.F	>0.9
LED chip	Lumileds
Driver	Meanwell Philips

Installation

Installation	Inground recessed
Wiring	Product complete with electronic components

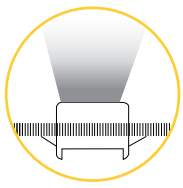
Luminaire Body Finish Color

Grey Ral 9006



Certificate & Warranty

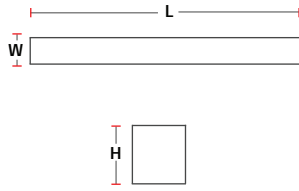
Certification	CB CE LM79 LM80 TM21 Photo biological
Lifetime expectancy	50.000 hrs
Warranty duration	Up to 5 years



Fusion

Walk/Drive-over

Dimensions & Specs



Recessed Linear

All dimensions in these sketches are in millimeters

Dimensions of luminaires

Dim	Length	Width	Height
1	500mm	30mm	76mm
2	1000mm	30mm	76mm

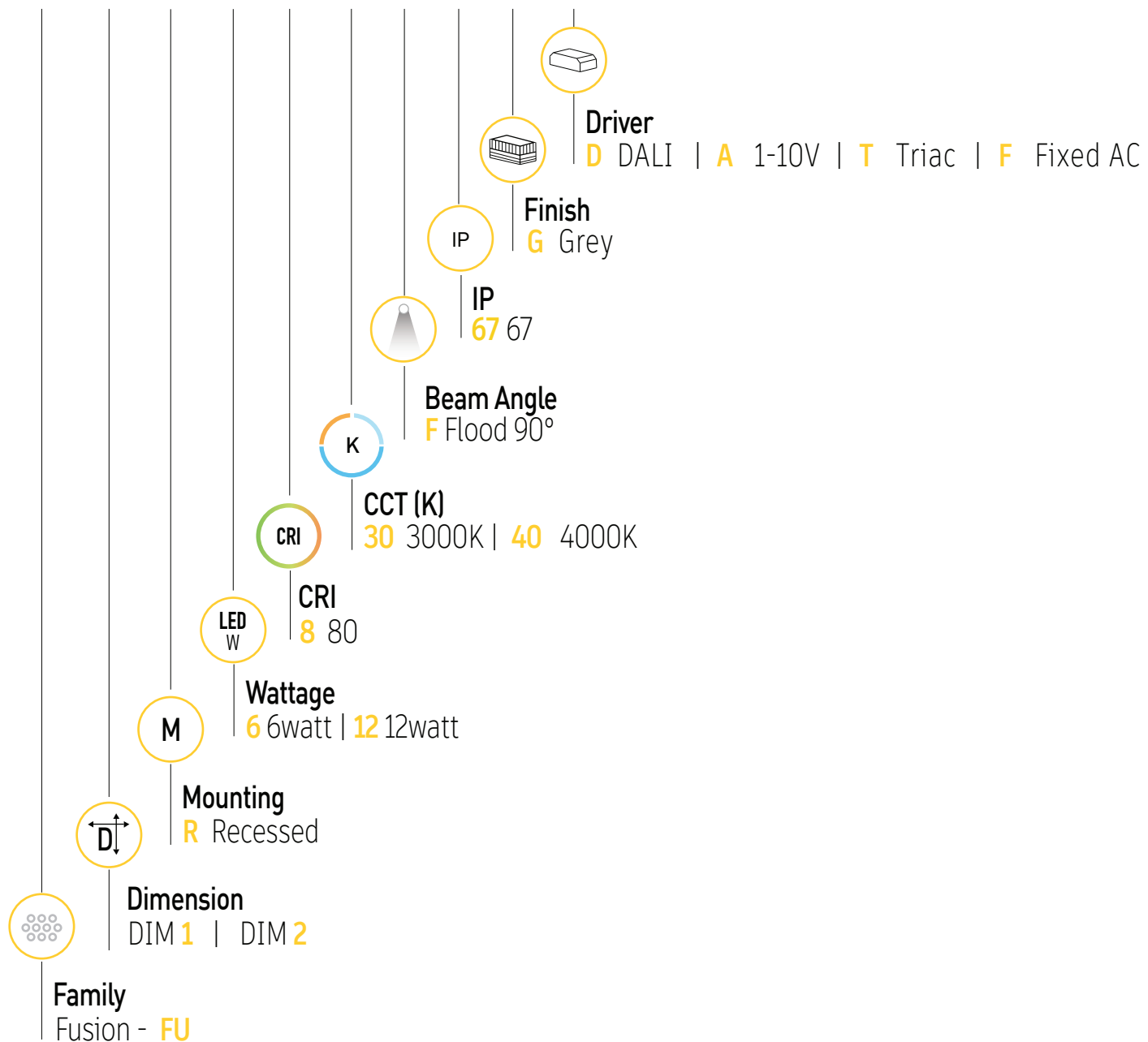
Specs

Wattage (W)	lumen (lm)
6 watt	600lm
12 watt	1200lm

All dimensions in this schedule table are in millimeters

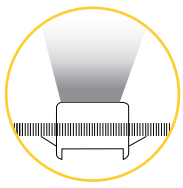
Product coding system

BR - FU X R XX.8 XX F 67 G - X



BR - FU X R XX.8 XX F 67 G - X

Configure luminaire specs & send us the code for order confirmation



Fusion

Walk-Driveover

Optional Application



RGB



Dimmable

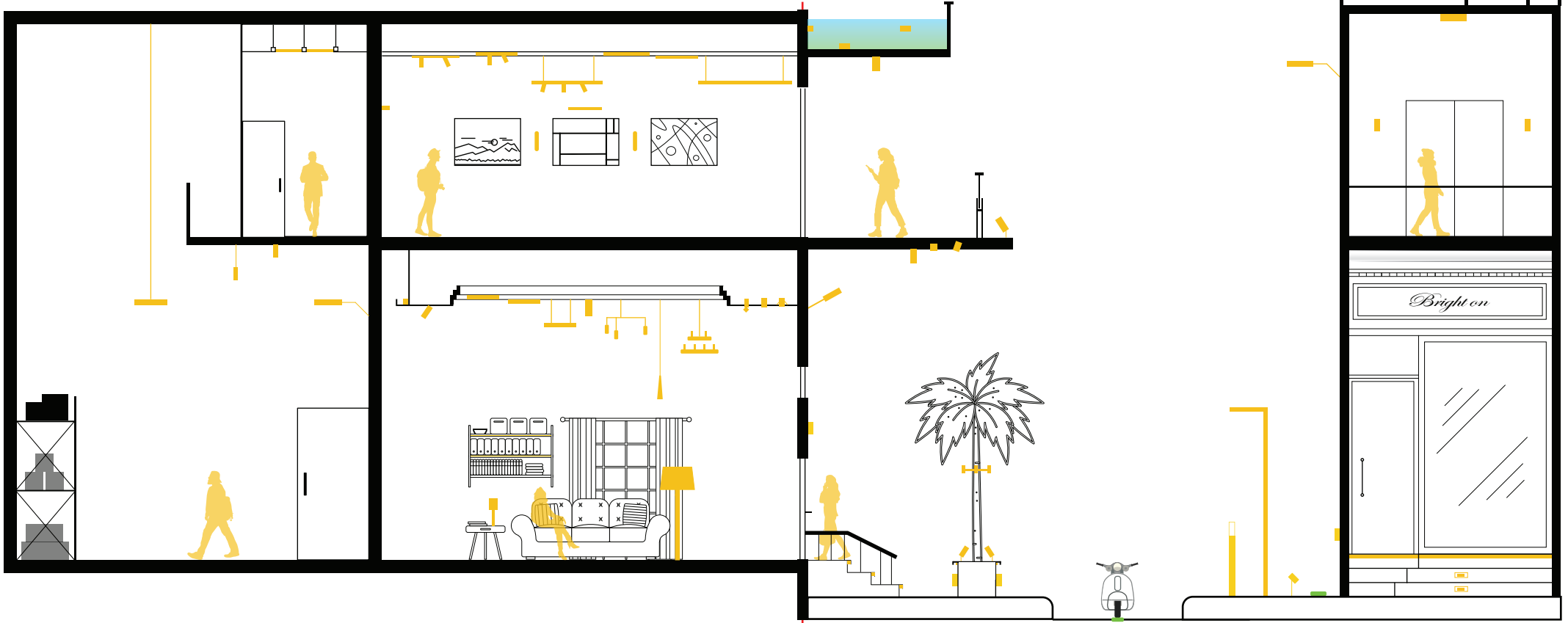
Brighton luminaires Map

■ Brighton Luminaires Range

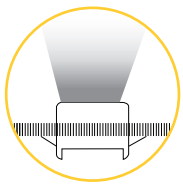
■ Selected Luminaire Default placement

Indoor

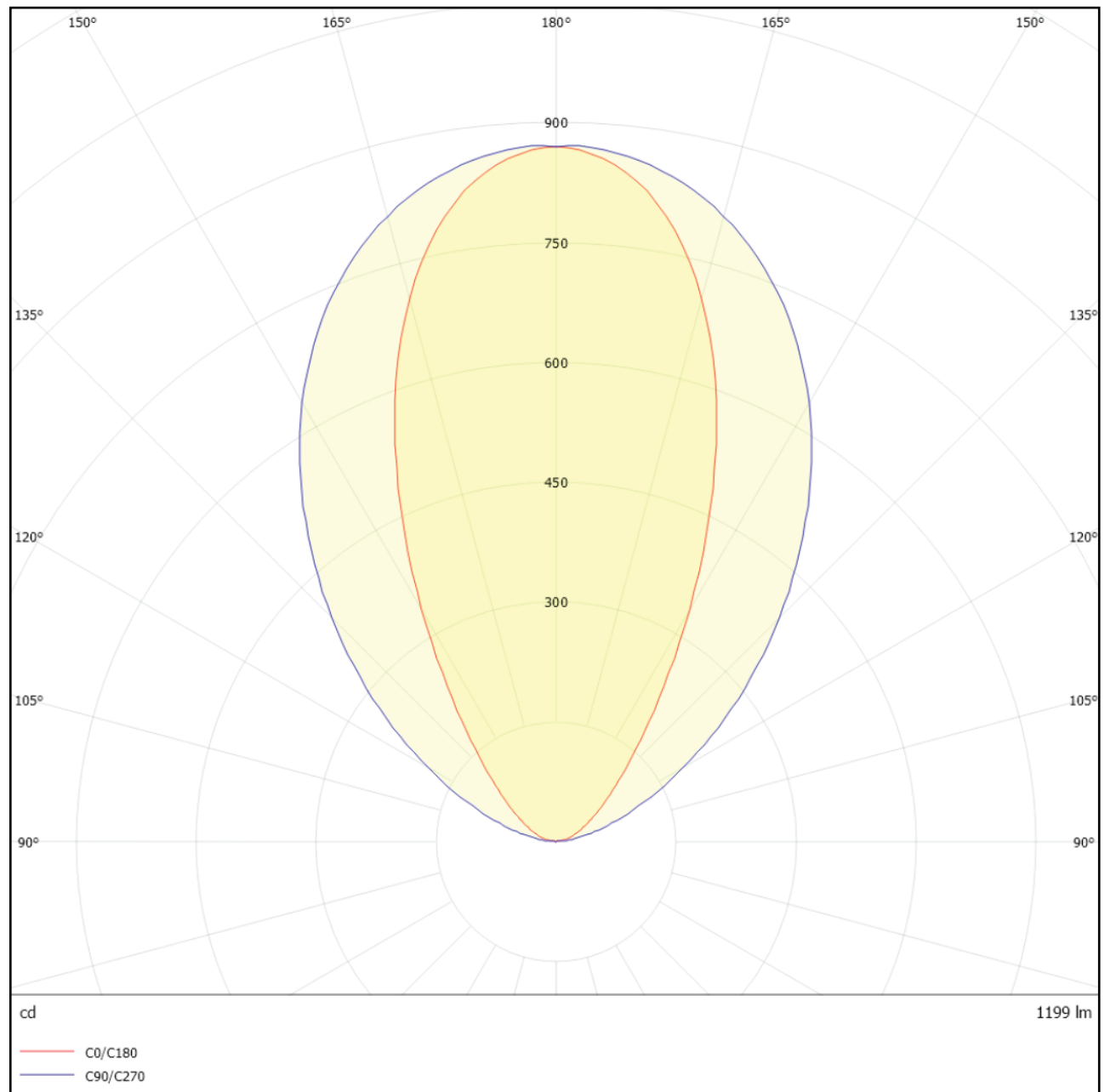
Outdoor



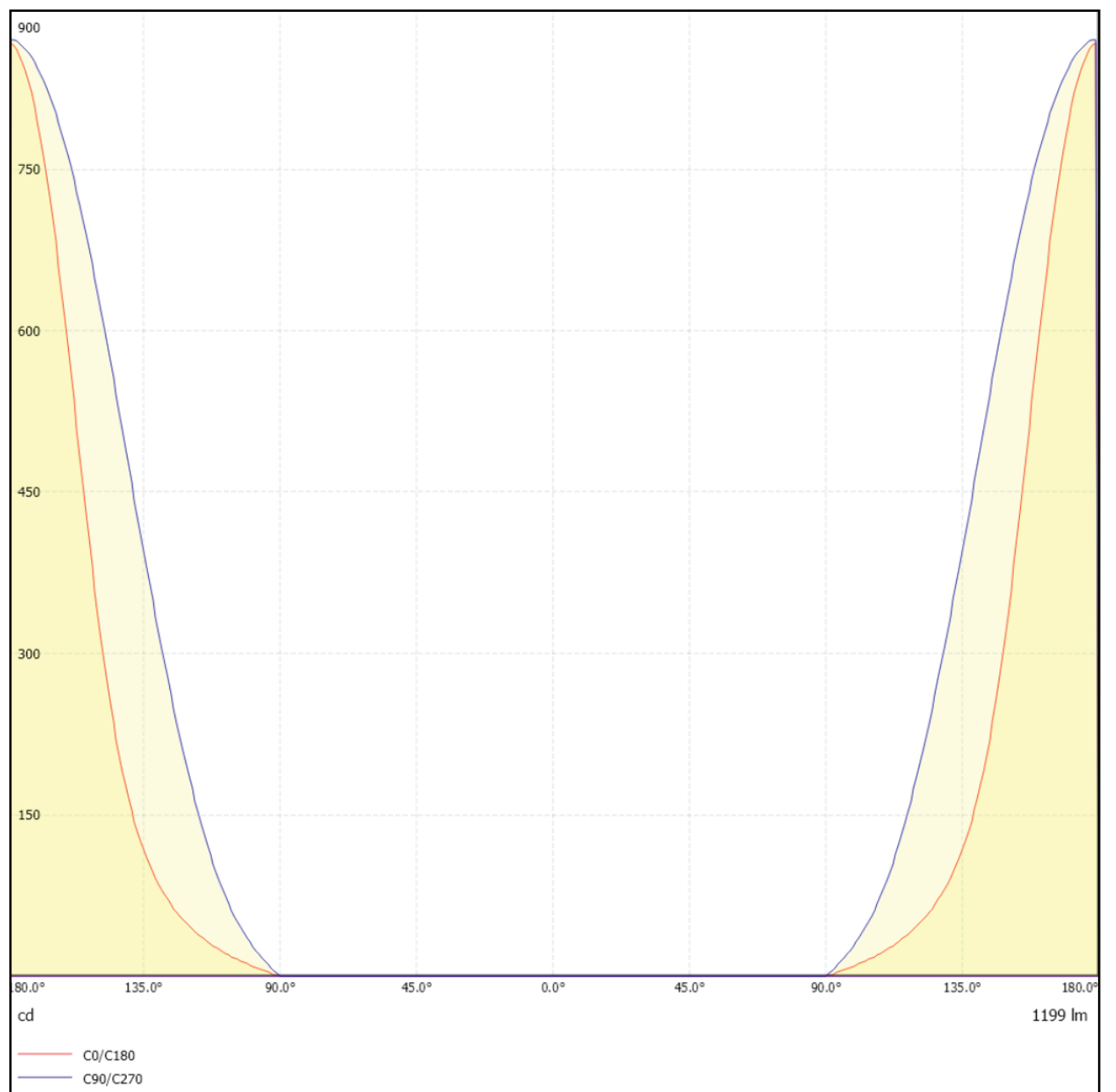
Accessories

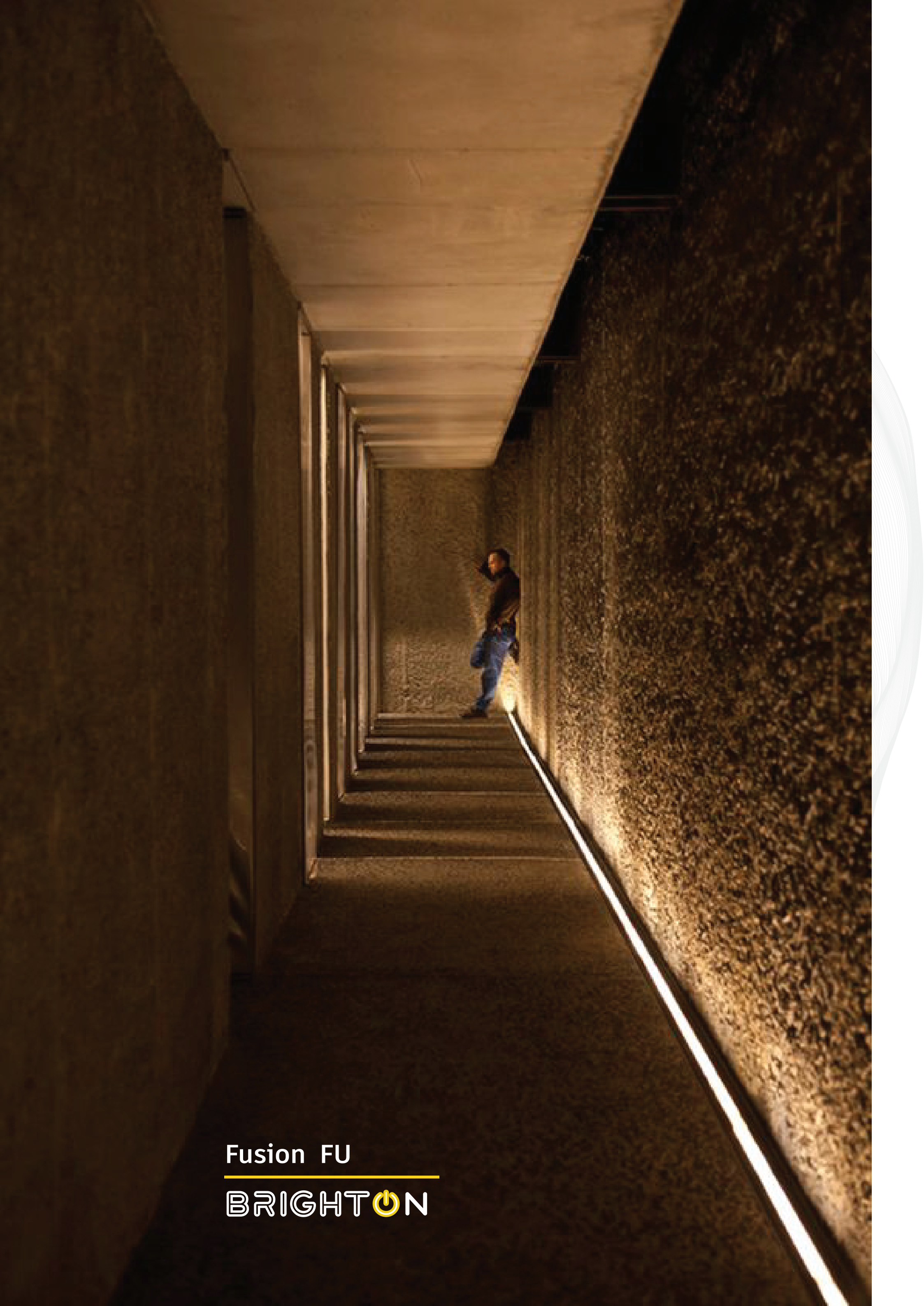


12 Watt 90° Beam Angle
Polar Curve



12 Watt 90° Beam Angle
Cartesian Diagram





Fusion FU

BRIGHTON