

DESCRIPTION



Cubik wall is a compact wall washer fixture with shielded light source that emit their light in either one or two directions. Such kind of luminaires is suitable for many applications around the house and in public areas.



Driver



LED Chip



Illumination Data

Color temperature:	3000K 4000K
Lumen output:	900 LM
CRI	80
Beam angle	35° Medium 2x35° Medium

Physical Specification

Material Finish	Die cast aluminium
Diffuser	Polycarbonate
Optics	Clear
Ingress protection (IP)	65
Impact Protection (IK)	10

Electric Characteristics

Light source	LED Built in
LED type	COB
Power	9.5 Watt 2x9.5Watt
P.F	>0.9
LED chip	Cree
Driver	HEP

Installation

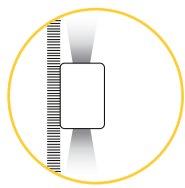
Installation	Surface Wall Mounted
Wiring	Product complete with electronic components

Luminaire Body Finish Color

White Ral 9003	
Grey Ral 9006	
Black Ral 9005	

Certificate & Warranty

Certification	CB CE LM79 LM80 TM21 Photo biological
Lifetime expectancy	50.000 hrs
Warranty duration	Up to 5 years

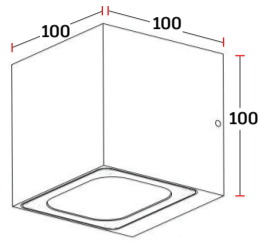


Cubik

Wall Mounted

Dimensions & Specs

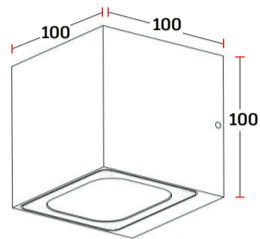
Down Light



DIM 1

All dimensions in these sketches are in millimeters

Up & Down Light



DIM 2

Dimensions & specs of luminaires

Downlight			
Dim	Length	Width	Height
1	100mm	100mm	100mm

Up & Downlight			
Dim	Length	Width	Height
2	100mm	100mm	100mm

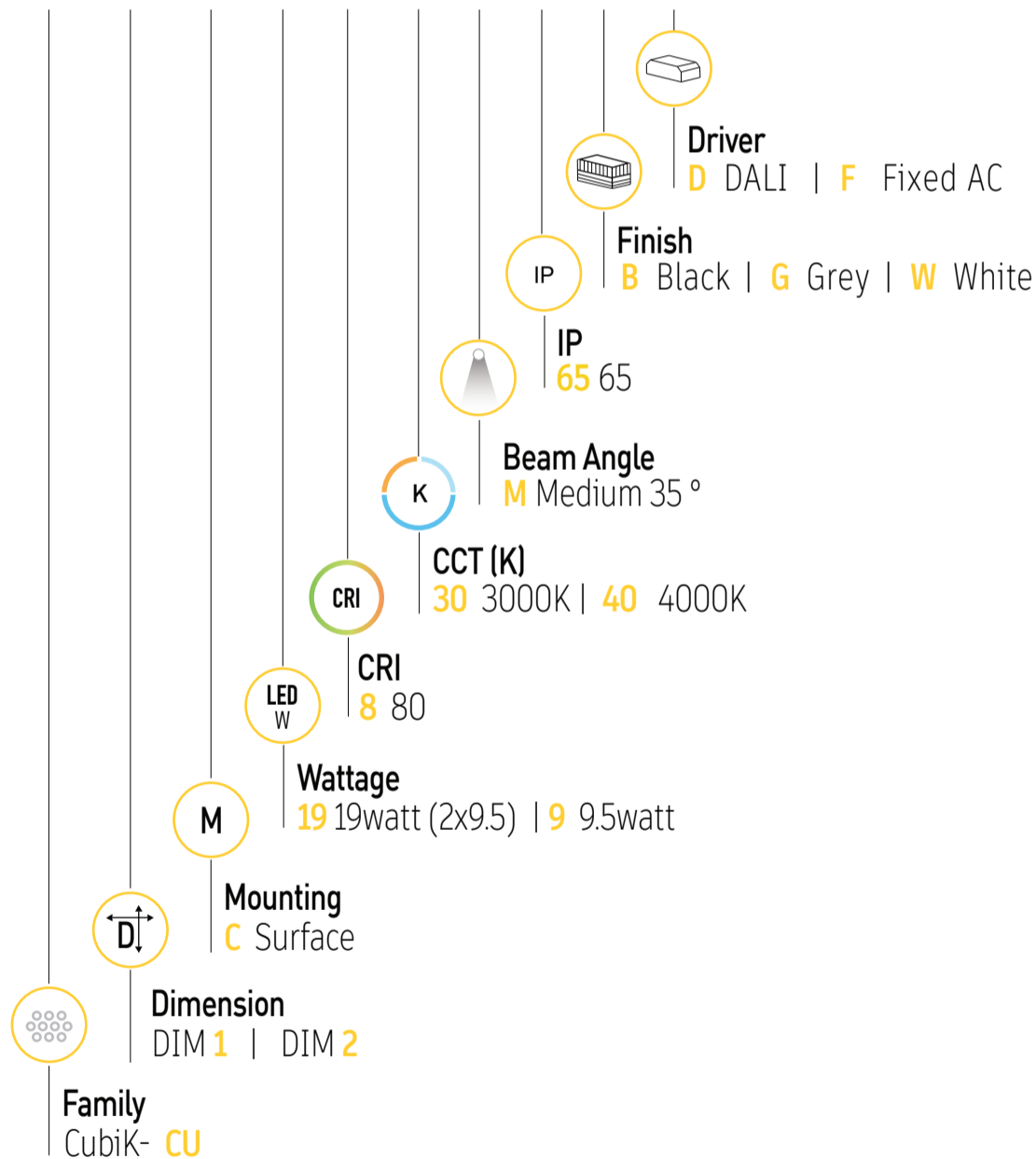
Specs

Dimension (mm)	Wattage (W)	lumen (lm)
DIM 1	9.5 watt	900lm
DIM 2	2x9.5 watt	2x900lm

All dimensions in this schedule table are in millimeters

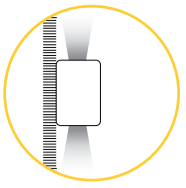
Product coding system

BR - CU X C X.8 XX M 65 X - X



BR - CU X C X.8 XX M 65 X - X

Configure luminaire specs & send us the code for order confirmation



Optional Application



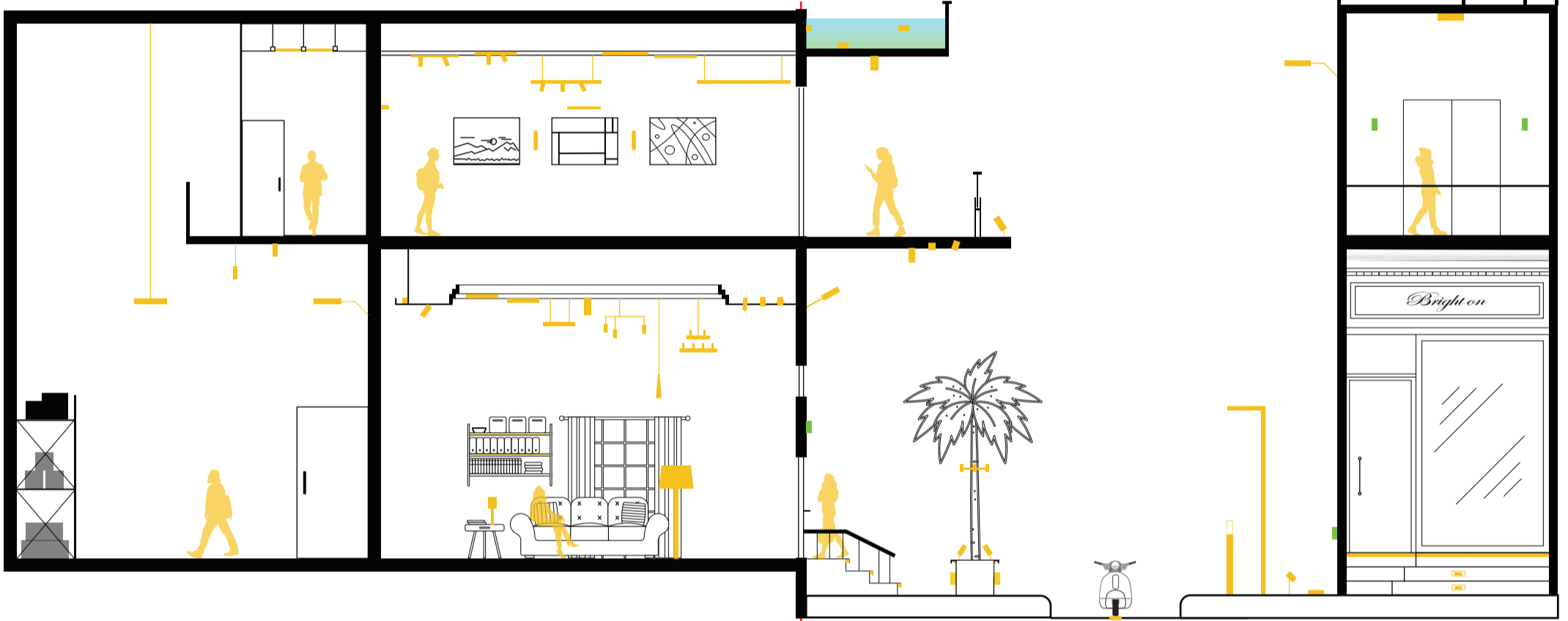
Dimmable

Brighton luminaires Map

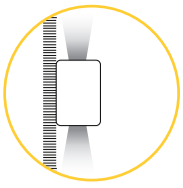
- Brighton Luminaires Range
- Selected Luminaire Default placement

Indoor

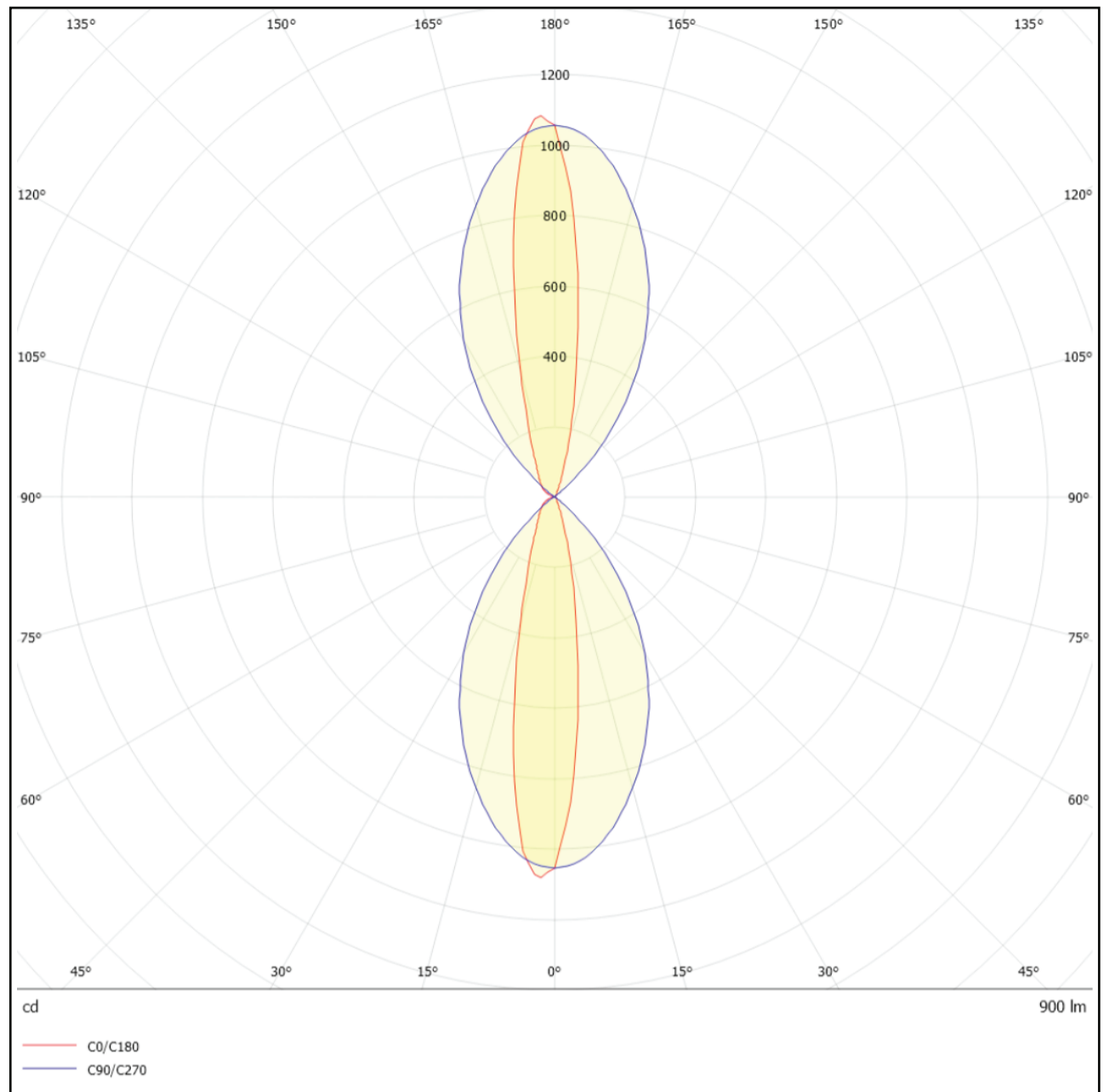
Outdoor



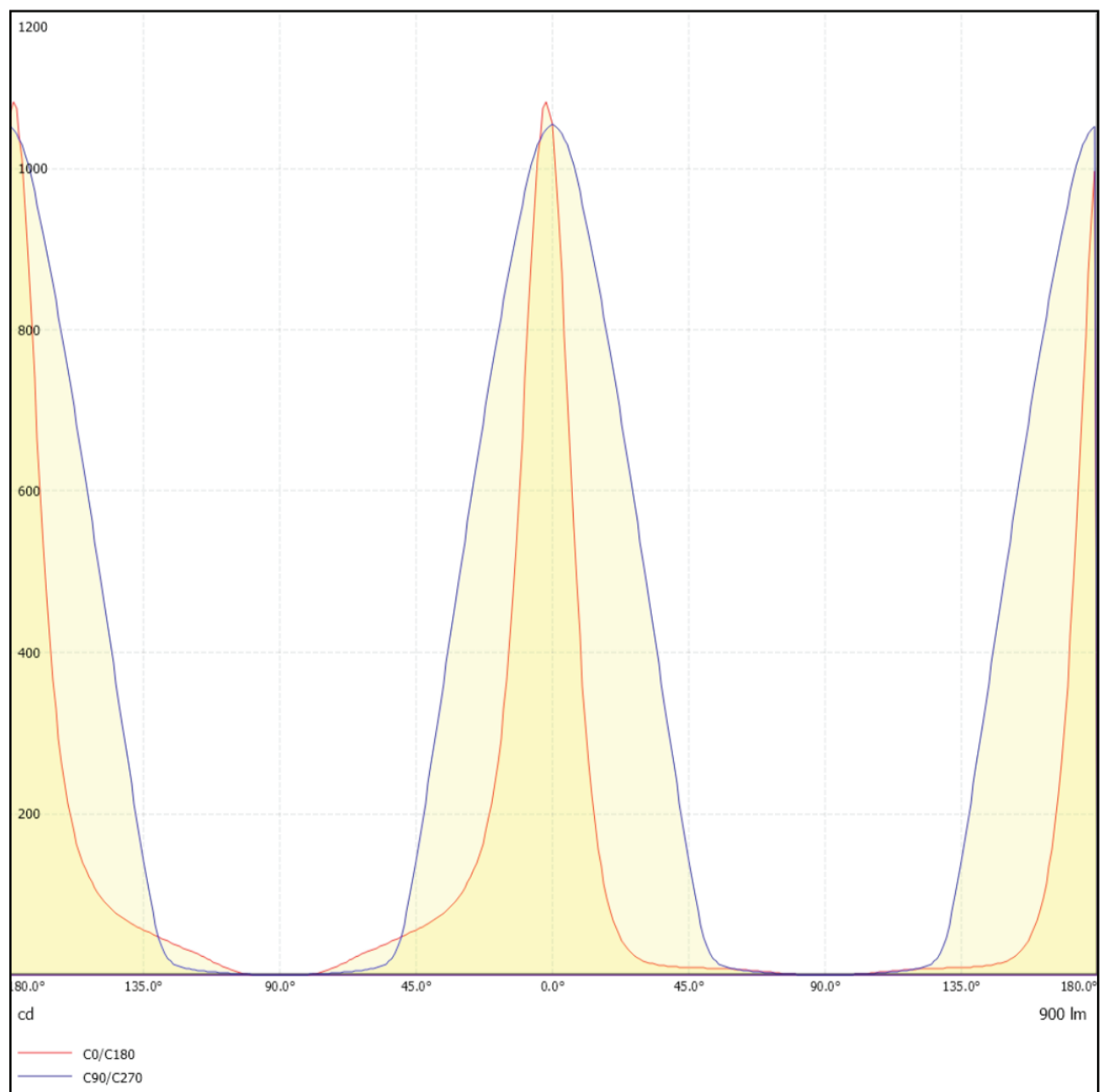
Accessories



9.5 Watt 35° Medium
Polar Curve



9.5 Watt 35° Medium
Cartesian Diagram





Cubik CU

BRIGHTON