

Aqua Pro

Weatherproof



DESCRIPTION

Aqua pro is multifunctional LED lamp which is designed for use in areas with high requirements for dust and water resistance. Especially recommended for lighting public facilities, including hospitals, educational facilities, halls, garages, passages, warehouses, commercial and industrial facilities factories, and laboratories.

PHILIPS

Driver

LUMILEDS

LED Chip



Illumination Data

Color temperature:	3000K 4000K
Lumen output:	2520 LM 5040 LM 6200 LM
CRI	80
Beam angle	110° flood

Physical Specification

Material Finish	Polycarbonate
Diffuser	Polycarbonate
Optics	Clear
Ingress protection (IP)	65 66
Impact Protection (IK)	08

Electric Characteristics

Light source	LED Built in
LED type	SMD
Power	18 Watt 36 Watt 50 Watt
P.F	>0.9
LED chip	Lumileds
Driver	Philips

Installation

Installation	Surface Suspended
Wiring	Product complete with electronic components

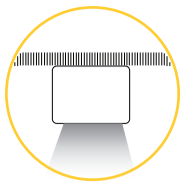
Luminaire Body Finish Color

Grey Ral 9006



Certificate & Warranty

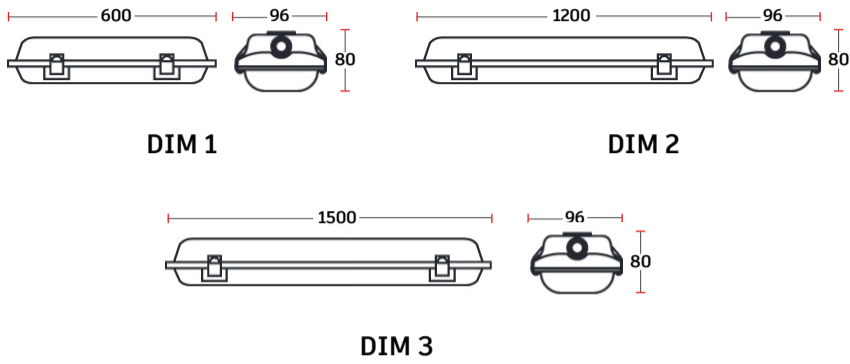
Certification	CB CE LM79 LM80 TM21 Photo biological
Lifetime expectancy	50.000 hrs
Warranty duration	Up to 5 years



Aqua Pro

Weatherproof

Dimensions & Specs



All dimensions in these sketches are in millimeters

Dimensions of luminaires

Dim	Length	Width	Height
1	500mm	96mm	80mm
2	1200mm	96mm	80mm
3	1500mm	96mm	80mm

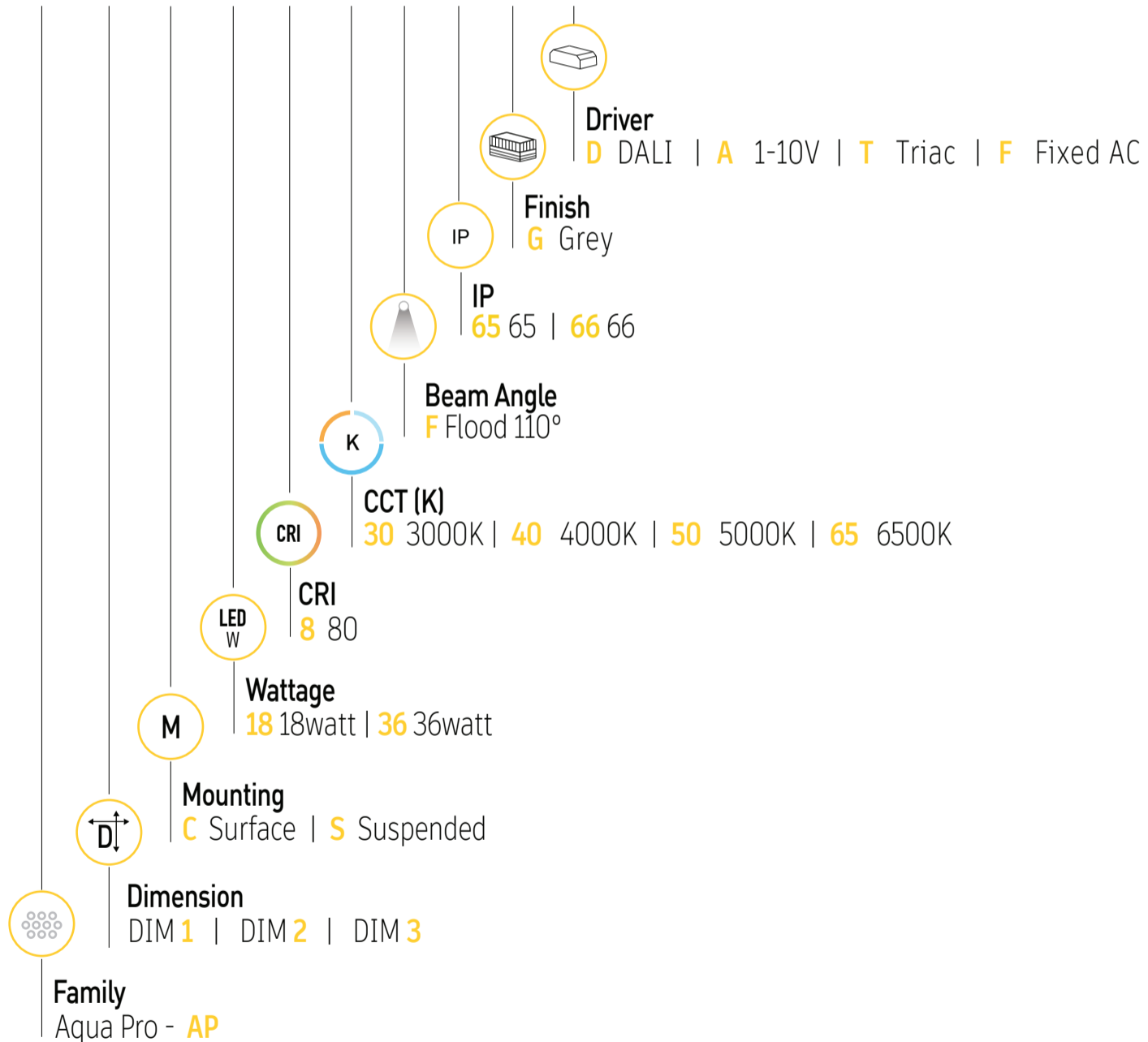
Specs

Wattage (W)	lumen (lm)
18 watt	2520lm
36 watt	5040lm
50 watt	6200lm

All dimensions in this schedule table are in millimeters

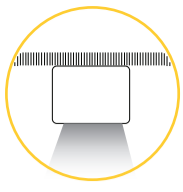
Product coding system

BR - AP X X XX.8 XX F X G - X



BR - AP X X XX.8 XX F X G - X

Configure luminaire specs & send us the code for order confirmation



Aqua Pro

Weatherproof

Optional Application



Battery



Dimmable

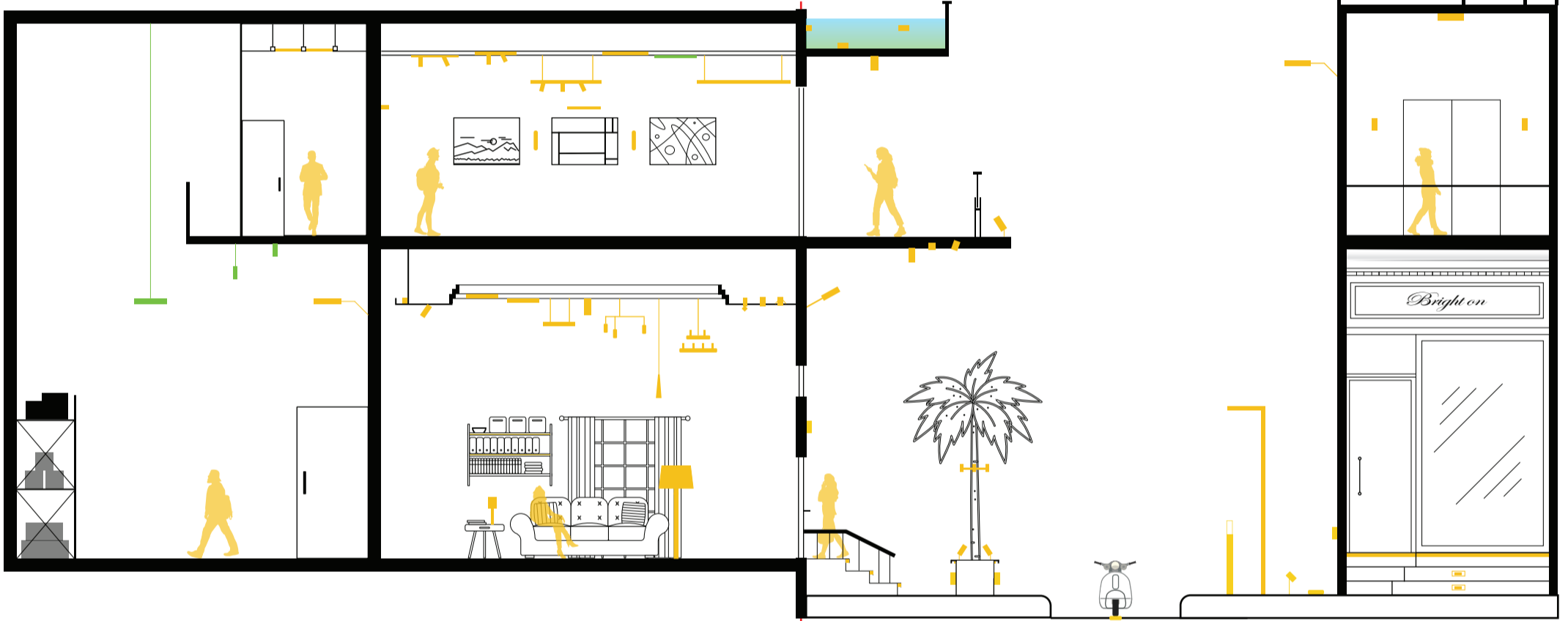
Brighton luminaires Map

Brighton Luminaires Range

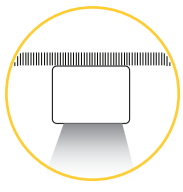
Selected Luminaire Default placement

Indoor

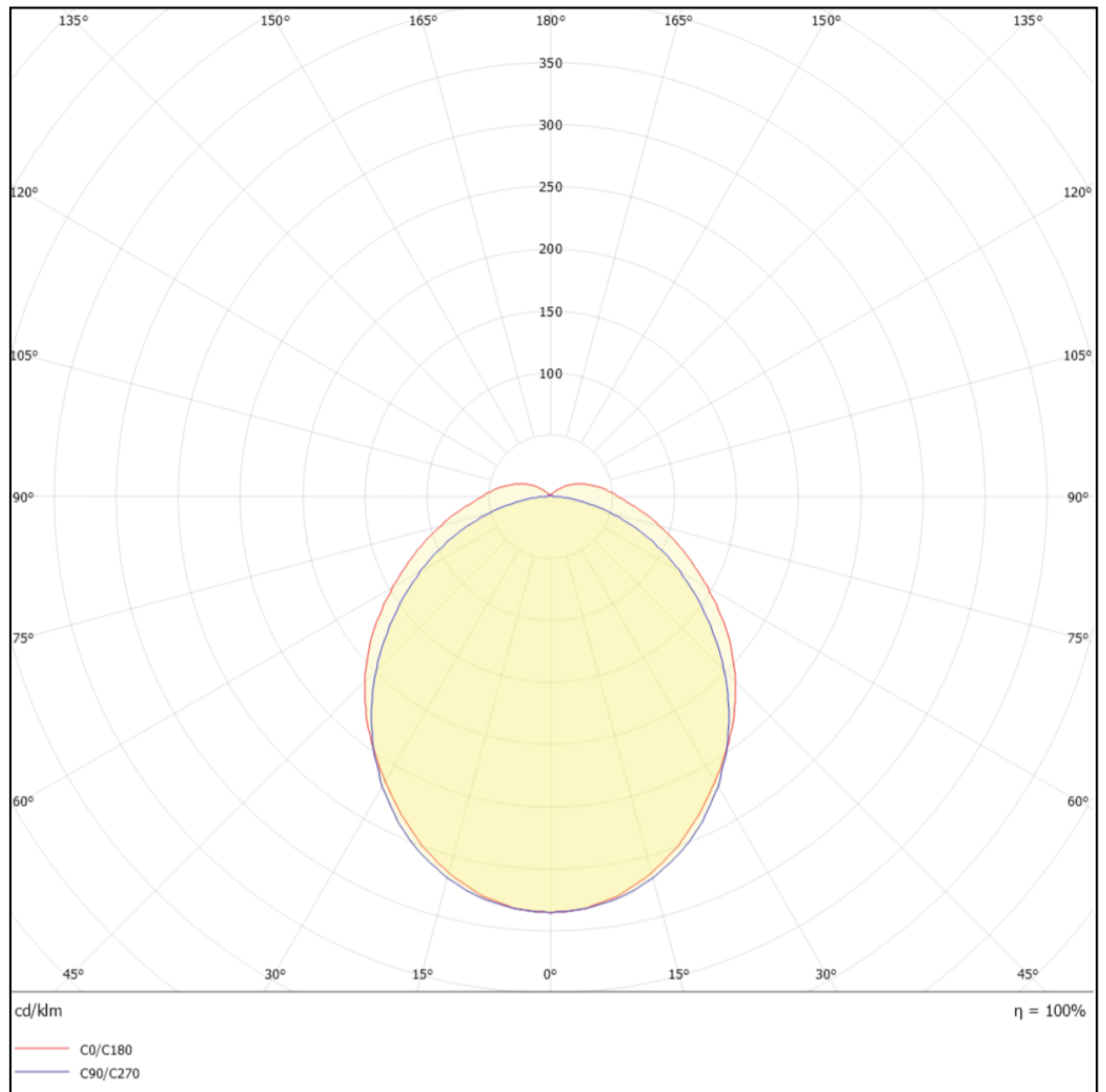
Outdoor



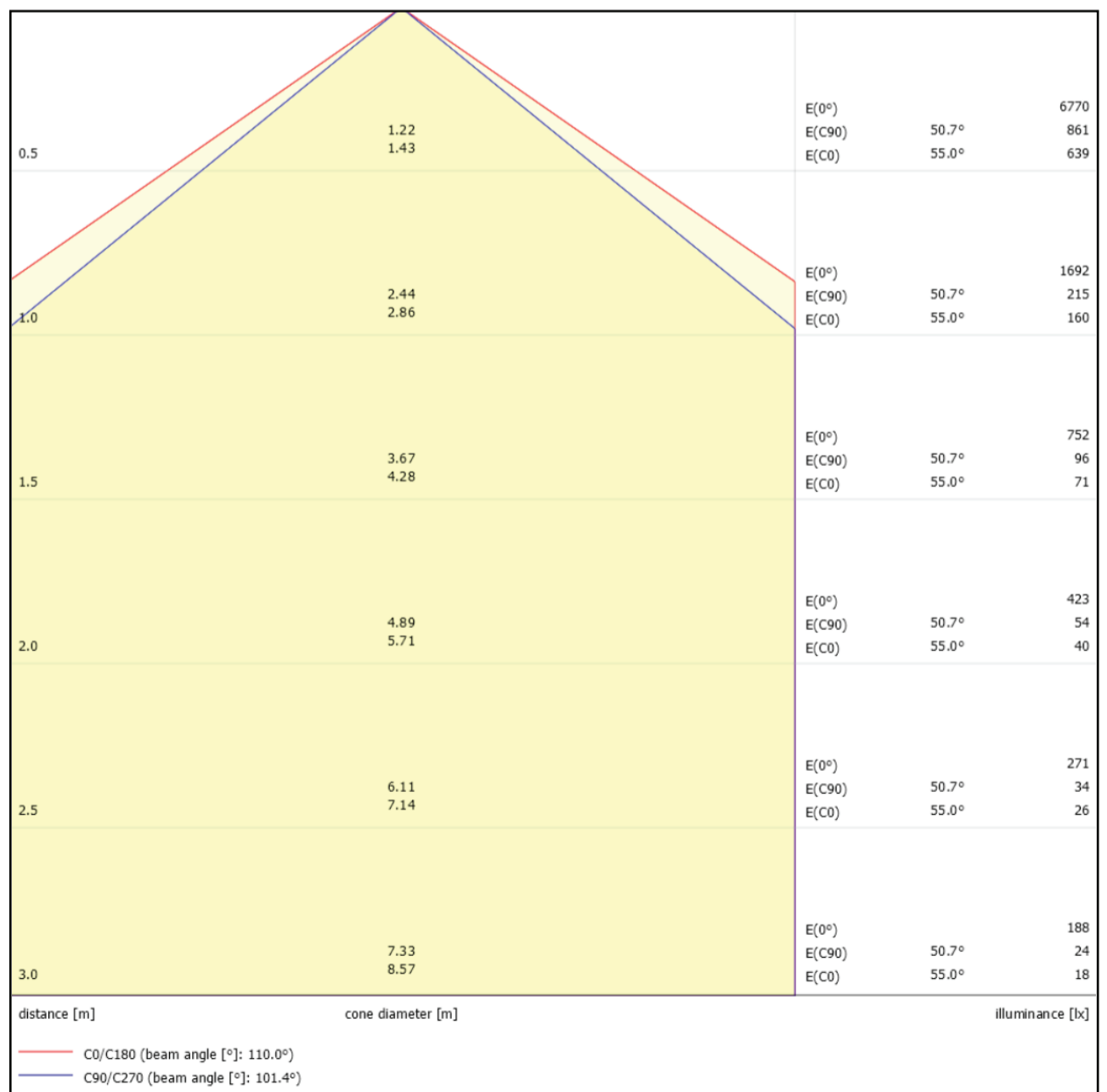
Accessories



36 Watt 110° Beam Angle
Polar Curve



36 Watt 110° Beam Angle
Cone Diagram





Aqua Pro AP

BRIGHTON

